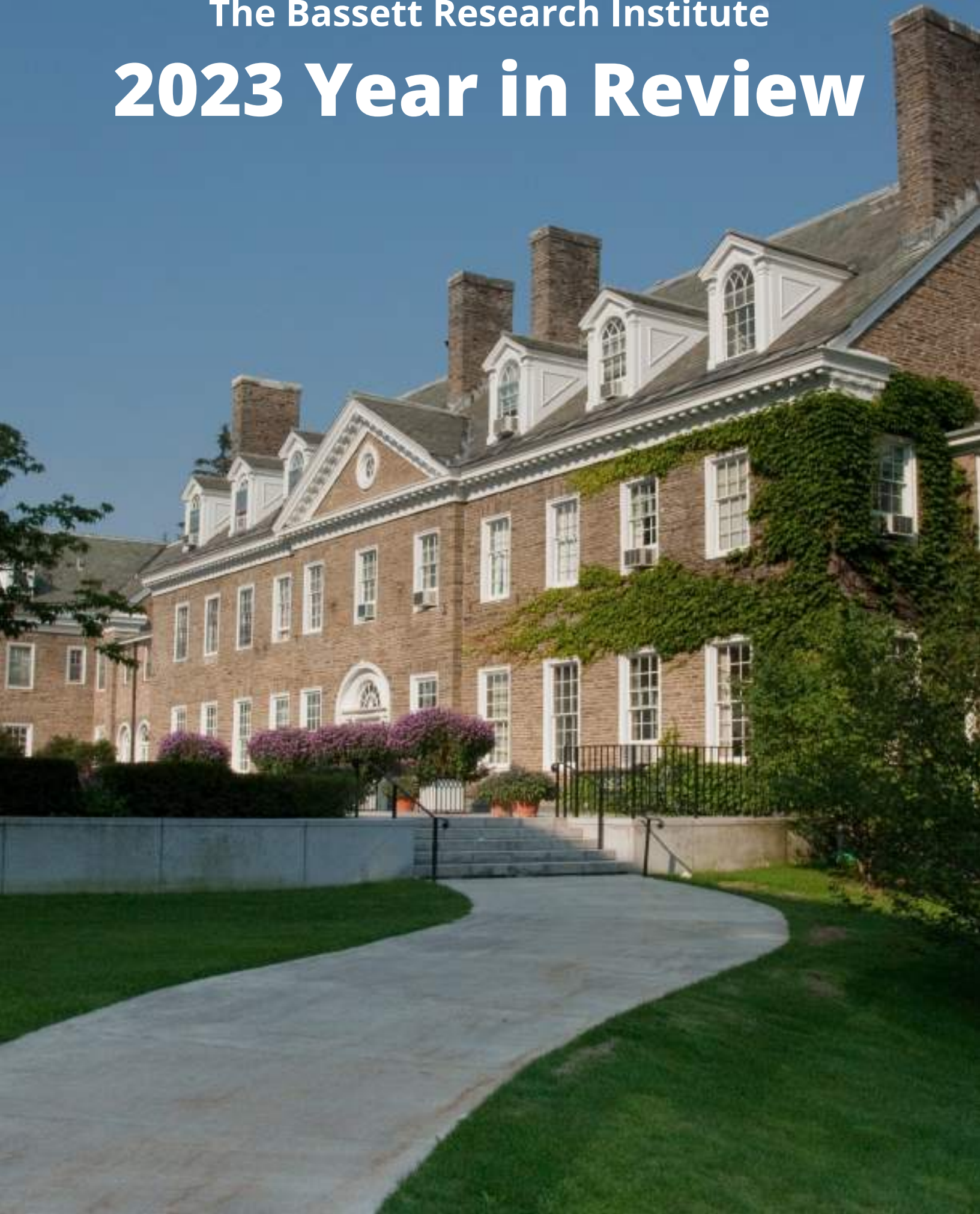


The Bassett Research Institute
2023 Year in Review





The Bassett Research Institute Mission

The Bassett Research Institute conducts research to understand and improve the health and well-being of individuals and rural populations. We develop strategies to improve health care delivery, prevent illness, and manage chronic disease in support of the Bassett Healthcare Network's mission.

Table of Contents

A Note from the Administrative Director.....	1
Institutional Review Board.....	2
Research OSP/Network OGM.....	3
Center for Rural Community Health.....	4
Wilmot Cancer Center Collaboration.....	14
Center for Clinical Research.....	15
Center for Biostatistics.....	17
Center for Evaluating Rural Interventions.....	19
Columbia-Bassett Medical School Student Research.....	22
Publications.....	23
Presentations.....	25
Media Coverage.....	27
Research Grand Rounds.....	28
Research Celebration Week 2023.....	30
The Umeå Bassett Collaborative.....	31
Congratulations, Drs. Scribani and Pullyblank!.....	33
Staff News and Updates.....	34



A Note from the Administrative Director



Reflecting on 2023, it has been a year of collaboration and teamwork for the Bassett Research Institute (BRI). We entered the year with a vacancy in the director role and ended the year in the same status and yet, can point to considerable achievements and growth to be proud of! As we enter 2024, the promise of filling the director position looms ever closer as we review strong candidates for the position. In the interim, the dedicated and skilled staff at the BRI endeavor to advance our mission of conducting research to understand and improve the health and well-being of individuals and rural populations.

In the Center for Rural Community Health, Wendy Brunner, PhD, led the Rural Parent HPV Vaccine Video Project. Supported by a HRSA grant and in collaboration with our Center for Biostatistics and experts from the University at Albany and UCLA, Wendy led a project to develop a set of short informational videos aimed to increase HPV vaccine confidence among parents. This work led to a grant application to NIH in October to conduct research on the use of the videos in clinical settings (Pediatrics and School-Based Health Clinics.)

Kristin Pullyblank earned her PhD in Nursing, was promoted to Research Investigator II, and almost immediately initiated a collaboration with the University of Nebraska Medical Center, College of Public Health. Kristin is working with Dr. David Dzewaltowski on the Diabetes on Track initiative. This is a 3- year privately funded project to improve diabetes outcomes in rural Nebraska. Kristin is serving as a post-doctoral consultant as a diabetes content expert for project implementation and evaluation.

Wendy Brunner, PhD in collaboration with Cornell University has been awarded a 5-year grant from NIH to study the impact of School-Based Health Centers on the health of rural students and their communities.

Mindy Robinson completed her first full year serving as the Research Coordinator for Cancer Research and Outreach. The University of Rochester's Wilmot Cancer Institute and Bassett Medical Center collaborated to develop this program with the goal of leveraging resources from both organizations to increase enrollment in clinical trials and public awareness for outreach programs initiated by Wilmot and Bassett.

In the Center for Clinical Research, Dr. Dan Freilich has led efforts to expand our clinical trials. The COMBO 1 Clinical trial has been expanded from a single site study to a multicenter trial bringing on Bay State Medical Center in Springfield, MA and Oregon Health Science University in Portland, OR. In collaboration with Johns Hopkins, he has worked to develop two new projects. The COMBO AC application was submitted, but was declined, Dr. Freilich is currently working on protocol revisions and alternative funding sources. Dr. Freilich has also submitted an application entitled: "VPS - Vancomycin and Piperacillin/Tazobactam Nephrotoxicity or Pseudonephrotoxicity? A Pragmatic Adaptive Comparative Randomized Controlled Trial to Optimize Safety for Hospitalized Patients with Severe Infections". This proposed study has been submitted to the Patient- Centered Outcomes Research Institute's (PCORI) Broad Pragmatic Studies program.

There were many other collaborations and initiatives that got off the ground in 2023, including bringing back Research Week which had been tabled since the beginning of COVID. And perhaps most notably, in August the BRI hosted a week-long symposium to build upon a decades-long collaboration with Umeå University's department of Epidemiology and Global Health.

Thanks to everyone who has contributed to the success of the Bassett Research Institute in 2023. It is a great honor to work with all of you!



Institutional Review Board (IRB)



Institutional Review Board:

Chair, IRB: Wendy Brunner, PhD

Vice-Chair, IRB: Michelle Nowlan, BS, RN, CPPS

Program Manager, IRB: Heidi Johnson, CIP

Coordinator, Dept. Operations: Beth Utter, BA

The **Institutional Review Board** (IRB) is comprised of thirteen voting members and twelve alternate members of varying backgrounds, in addition to the Chair and Vice-Chair of the Board. The Board is charged with providing a complete review of research activities commonly conducted by investigators within the network. The Board meets at least once per month on the first Tuesday of every month. It is responsible for conducting an initial review process, a continuing review process and for maintaining a record of all IRB activities, in accordance with the HHS regulation for the Protection of Human Subjects as defined by the Code of Federal Regulations (45 CFR 46 and 21 CFR 50, 56). Three members resigned and three new members came on the committee during the course of the year.

At the end of 2023 there were 89 active protocols approved for research activities within the network. During 2023, four new protocols were approved; one was a clinical trial and three were based on non-experimental study designs to analyze existing datasets or use qualitative or quantitative methods for collection and analysis of primary data. Eighteen protocols were completed and terminated in the course of 2023.

The IRB Office has standing agreements and protocols to engage the service of external IRBs when Bassett investigators are collaborators in multi-site industry-sponsored or NIH-funded clinical trials; current partnerships include the National Cancer Institute's Central Institutional Review Board (CIRB), Advarra, WCG IRB, University of Rochester Research Subjects Review Board, and University of Florida IRB.

Other activities of the Board during the past year included:

- Monitoring and reviewing the local occurrence of adverse events (0 during the 12 month period) and protocol deviations (1 during the 12 month period)
- Reviewing numerous protocol amendments and modifications proposed to ongoing research studies (168 during the 12 month period)
- Continuing education sessions for IRB members held during the course of the year included topics on participants' perspectives on payment for research participation.

One hundred and three administrative reviews were performed in 2023.



The Research Office of Sponsored Programs/Network Office of Grants Management



Office of Grants Management:

Administrative Director: Stephen Clark
Business Manager: Melinda Hasbrouck, MBA

The **Research Office of Sponsored Programs (OSP)** supports the submission of all Research Institute and NYCAMH grant applications and assists as requested with non-research applications for the organization. The Research OSP provides support and guidance to Research Principal Investigators for all phases of post award management, including management of contracts and sub-awards, quarterly and annual reporting and grant close out. The Research OSP monitors and maintains all state and federal grant submission and tracking platforms and assures that the organization remains in compliance with all state and federal regulations as they pertain to grant supported programs.

In 2023, Research OSP staff continue to work closely with the Director of Governmental Affairs, Finance, and the Friends of Bassett to address opportunities for the larger organization with regards to pre and post award grant management as part of the **Network Office of Grants Management (OGM)**. The continued goal of this department is to support grant application development to increase overall external funding for the organization and to implement practices to significantly improve post award management performance/compliance. Benefits to Research include a reduction in overall risk to the organization with regards to grants stewardship/compliance as well as significant support for collaborations and new opportunities within the organization. Here is a list of the 25 grants submitted in 2023:

Principal Investigator	Granting Agency	Application Title
Amanda Roome, PhD, and Pam Milkovich, PhD	NIOSH	Safety Culture: Understanding AgFF Safety Culture to Promote Adaptable Change
Carolyn Wolf-Gould, MD	DOH	Gender Wellness Center’s Support Services for Transgender and Gender Non-Conforming (TGNC) Individuals
Carolyn Wolf-Gould, MD	DOH	Empowering TGNC People Through Mental Health Care

table continued on next page...



The Research Office of Sponsored Programs/Network Office of Grants Management

Principal Investigator	Granting Agency	Application Title
Daniel Freilich, MD, sub award with John's Hopkins Univ as lead	NIH	COMbination influenza therapy with Baloxavir, Oseltamivir, And Corticosteroids: Enhancing Rural Research Capacity to Address Urban-Rural Healthcare Disparities
Daniel Freilich, MD, with Johns Hopkins University as sub	PCORI	The Vancomycin and Piperacillin /Tazobactam Patient Safety (VPS) RCT
Daniel Katz, MD/Bishesh Shrestha, MD	AHA	Assessing Genetics and Cardiovascular Outcomes in Severe Hypertriglyceridemia in a Rural Founder Population
Daniel Katz, MD/Bishesh Shrestha, MD	AHA	Genetic Discovery in a Rural Patient Population with Increased Prevalence of Severe Hypertriglyceridemia
Erika Scott, PhD	NIOSH	NIOSH Surveillance
Greg Rys, NP	HRSA	Bassett Medical Center's Advanced Nursing Education Nurse Practitioner Residency (ANE-NPR)
Julie Sorensen, PhD	NIOSH/U.S. Coast Guard	In the Wheelhouse: Empowering Fishermen Through Community Partnerships to Improve Health and Safety

table continued on next page...



The Research Office of Sponsored Programs/Network Office of Grants Management

Principal Investigator	Granting Agency	Application Title
Julie Sorensen, PhD	NYS DOL	The New York Center for Agricultural Medicine and Health: Health and Safety Training
Julie Sorensen, PhD and Rich Stup, PhD	USDA Dairy Promotions Order Board	Promoting Investments in Workforce Well-Being: Helping NYS Dairies Set the Pace for Marketing Social Responsibility
Laura Jones, PhD, David Carpenter, MD (SUNY RF), Gayle Morse (Assoc. Prof. Psychology; Sage Colleges) and Kathleen Kerr (Environmental Epi, University of Toronto)	DOD	Changes in concentrations of persistent organic pollutants in Gulf War Illness veterans after a comprehensive detoxification program.
Laura Jones, PhD sub of SUNY Research Foundation, with PI's: David Lawrence, PhD, Mia Gallo, PhD, David Carpenter, MD	EPA	Environmental health disparities in the Akwesasne Mohawk Nation due to polychlorinated bip
Laura Jones, PhD sub of SUNY Research Foundation, with PI's: David Lawrence, PhD, Mia Gallo, PhD, David Carpenter, MD	NIH	Redox associated biosignatures of age and environment affecting Native Americans
Nicole Blanchard, DrPH	HRSA	Creating an Aging in Place Continuum of Care in the Northern Catskills and Central NY
Scott Cohen, MD/Henry Knoop, PA	Rural Utilities Services	The Bassett Medical Center is requesting funding for the Telemedicine Expansion Project to improve access to healthcare for patients and residents who live in rural New York state.

table continued on next page...



The Research Office of Sponsored Programs/Network Office of Grants Management

Principal Investigator	Granting Agency	Application Title
Timothy Korytko, MD/Kristin Pullyblank, PhD (sub of Fred Hutch Cancer Center)	NIH	A Multisite Randomized Controlled Trial of Ca-HELP-A to Improve Pain Self-Management among Older Adults with Cancer in Rural Settings
Wendy Brunner PhD	Exact Sciences	Developing and embedding a multicomponent intervention using local videos to close the rural CRC cancer screening gap
Wendy Brunner PhD, Jane Hamilton RN	NY Health Foundation	Building Capacity to Address the Mental Health Needs of our Youth and Adults in Rural Central NY
Wendy Brunner PhD, Jane Hamilton RN, Jennifer Hecox PTA	Mother Cabrini Health Foundation	A Three-Pronged Approach for Building Capacity to Address the Mental Health Needs of our Youth in Rural Central NY
Wendy Brunner PhD, Jennifer Manganello PhD, (University at Albany)	NIH	Feasibility of using HPV vaccine video messages tailored for rural parents as part of clinical practice
Wendy Brunner, PhD	NIH	Characterizing Trends in Lung Function and Respiratory Disease among Rural Volunteer Firefighters
Wendy Brunner, PhD sub of UCSF Veronica Yank, PhD	NIH	Primary care-based pilot ePCT of an online workshop for family caregivers of PLWD (People Living With Dementia)
Wendy Brunner, PhD, Sharon Tennyson, PhD (Cornell University)	NIH	School-Based Health Centers – An approach to address health disparities among rural youth



Center for Rural Community Health



Who We Are:

Director: Wendy Brunner, PhD

Director Emeritus: David Strogatz, PhD

Research Coordinator: Mindy Robinson, BA

Research Investigator: Kristin Pullyblank, PhD, RN

Research Assistants: Amanda Chapman, BS; Pamela Fingado, BS; Jenny Flynn, MS; Caitlin Liberati, MA

Health Educator: Carleen Henderson

Senior Health Educator: Lynae Wyckoff, MS

2023-24 Intern: Michaela Parker

The Center for Rural Community Health was established in 2011 to address the unique health needs of rural populations through research and education. Our team has experience designing, implementing, and evaluating studies using a variety of theoretical frameworks and methodological approaches. In collaboration with academic and healthcare partners, state and local public health organizations, among others, we strive to generate knowledge that will ultimately improve the health of rural communities. Major projects of the Center in 2023 reflect its ongoing commitment to this goal.

Research Collaborations in 2023:



See next page for full list of collaborations.



Center for Rural Community Health

 **Primary Care-Based Pilot of Online Workshop for Caregivers of People Living with Dementia**

Dr. Veronica Yank, University of California, San Francisco

In collaboration with Dr. Yank (PI), Drs. Brunner and Pullyblank submitted a pragmatic trial application to assess the feasibility of engaging primary care clinics to refer caregivers of those living with dementia to an asynchronous online self-management intervention.

 **Rural Parent HPV Vaccine Video Project**
Dr. Jennifer Manganello, SUNY Albany

 **Dr. Philip Massey, University of California, Los Angeles**

See page 10 for more information on the Rural Parent HPV Vaccine Video Project.

 **Wilmot Cancer Center Collaboration**
University of Rochester Medical Center

See page 14 for more information on the URMW Wilmot Cancer Center Collaboration.

 **Health of Rural Firefighters**
Drs. Mary Carey and Dillon Dzikowicz, University of Rochester School of Nursing

Collaborated on grant application and manuscript related to studies of the health of firefighters.

 **Graduate Study Interns**
Decker College of Nursing and Health Sciences, Binghamton University

Established a formal relationship with Decker to host MPH interns.

 **School-Based Health Centers and the Health of Rural Students**
Drs. Sharon Tennyson (PI), Mildred Warner, John Sipple, Elaine Wethington, Cornell University

See page 11 for more details on our study the impact of School-Based Health Centers on the health of rural students.

 **Diabetes on Track**
Dr. David Dzewaltowski, University of Nebraska Medical Center

See page 10 for more information on the Diabetes on Track initiative.

 **Catirondack Environmental Health Collaborative**
Dr. Alex Thomas, SUNY Oneonta

See page 12 for more information on the Catirondack Environmental Health Collaborative.



Center for Rural Community Health

I. RHENSOM

Lead: Lynae Wyckoff
Email: Lynae.Wyckoff@Bassett.org

To address the needs of the region as identified through the Community Health Needs Assessment(s), the **Rural Health Education Network of Schoharie, Otsego and Montgomery Counties (RHENSOM)** provided Prevention Agenda recommended, evidence-based programming and interventions. Key areas of work focused on improving access to farm fresh produce, nutrition education, and empowering adults to prevent and manage chronic conditions.



Figure 1: Fonda-Fultonville children prepare "Healthy Corn Dip" with Kimberly Ferstler, CCE Nutrition Educator.



Figure 2: Carleen Henderson helping patrons at the Bassett Medical Center Farmer's Market.



Figure 3: Jenny Flynn and Amanda Chapman providing Chronic Disease Self-Management education in Oneonta, NY.

II. Living Well

Lead: Lynae Wyckoff
Email: Lynae.Wyckoff@Bassett.org

Living Well continued to provide chronic disease prevention and self-management evidence-based programming. BCRCH researchers evaluated the impact of two innovative approaches to engaging patients in the suite of evidence-based programs: 1) one-on-one outreach with inpatients prior to discharge 2) mailing the diabetes self-management toolkit to people with uncontrolled diabetes.



Figure 1: Pam Fingado delivering self-management toolkit to inpatient at Bassett Medical Center

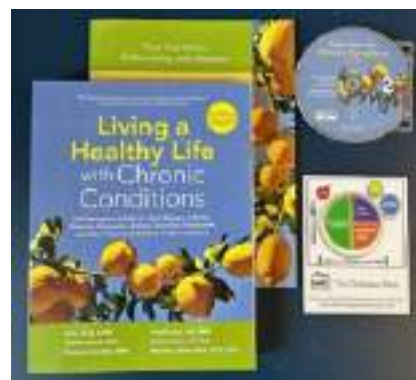


Figure 2: Diabetes Self-Management toolkit sent to patients with uncontrolled diabetes

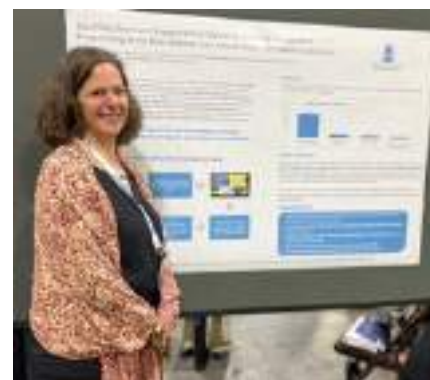


Figure 3: Kristin Pullyblank presenting evaluation findings at the 2023 American Public Health Association Conference.

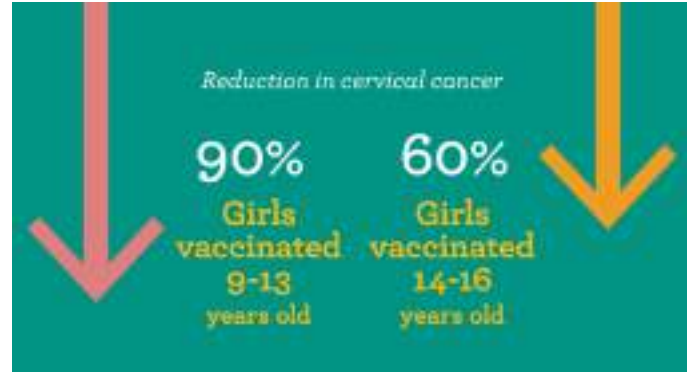


Center for Rural Community Health

III. Rural Parent HPV Vaccine Video Project

Lead: Wendy Brunner
Email: Wendy.Brunner@Bassett.org

Uptake of the Human Papilloma Virus (HPV) vaccine is low in rural areas, particularly among boys. With funding from a HRSA grant, staff from CRCH and Biostatistics, in collaboration with experts from University at Albany and UCLA, undertook a project to develop a set of short informational videos aimed to increase HPV vaccine confidence among parents. Over a 5-month period, the videos scripts were developed with the input of a Parent Advisory Board and six videos were filmed by a local videographer at the Cooperstown School-Based Health Center using local actors. To assess parent responses to the videos, we conducted interviews and an online survey of parents of children age 9-14 living in rural central New York State. In October, we submitted a grant application to NIH to conduct research on the use of the videos in clinical settings (Pediatrics and School-Based Health Clinics).

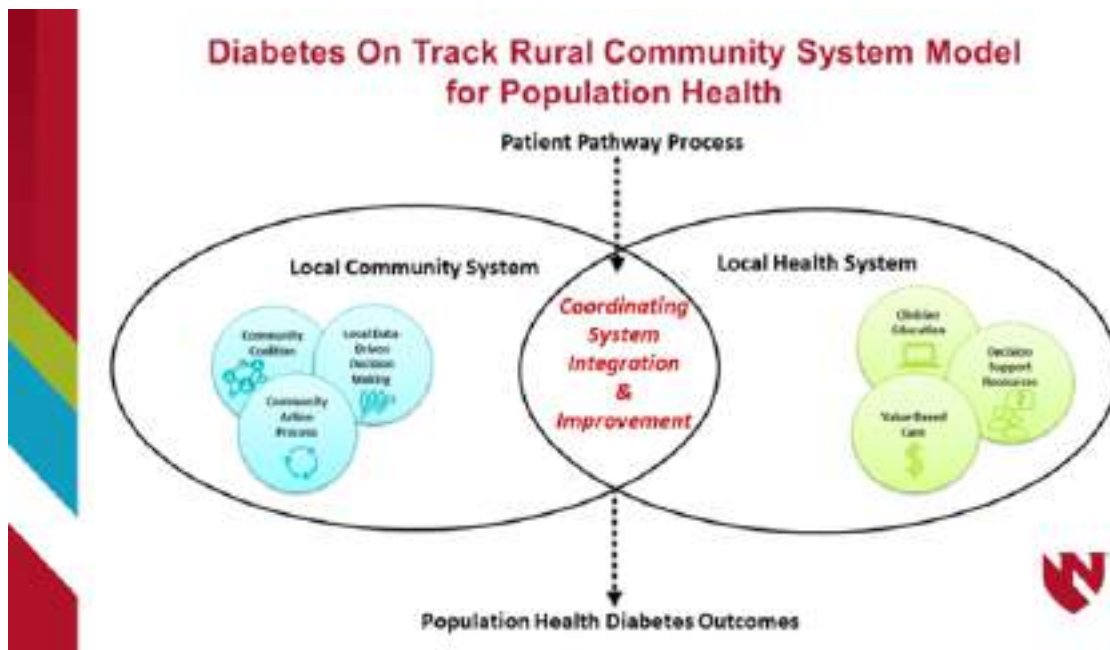


IV. Diabetes on Track

Lead: Kristin Pullyblank
Email: Kristin.Pullyblank@Bassett.org

In collaboration with the University of Nebraska Medical Center, College of Public Health, Diabetes on Track (PI: Dr. David Dziewaltowski) is a 3-year privately funded initiative to improve diabetes outcomes in rural Nebraska. The project is developing a novel process-oriented approach to rural whole-of-community diabetes care, prevention and education that embraces the complexity of community systems instead of ignoring it.

In her role as a post-doctoral consultant, Dr. Pullyblank serves as a diabetes content expert for project implementation and evaluation, particularly regarding the design of the community-clinical pathway. She will also lead the development of project manuscripts.



Center for Rural Community Health

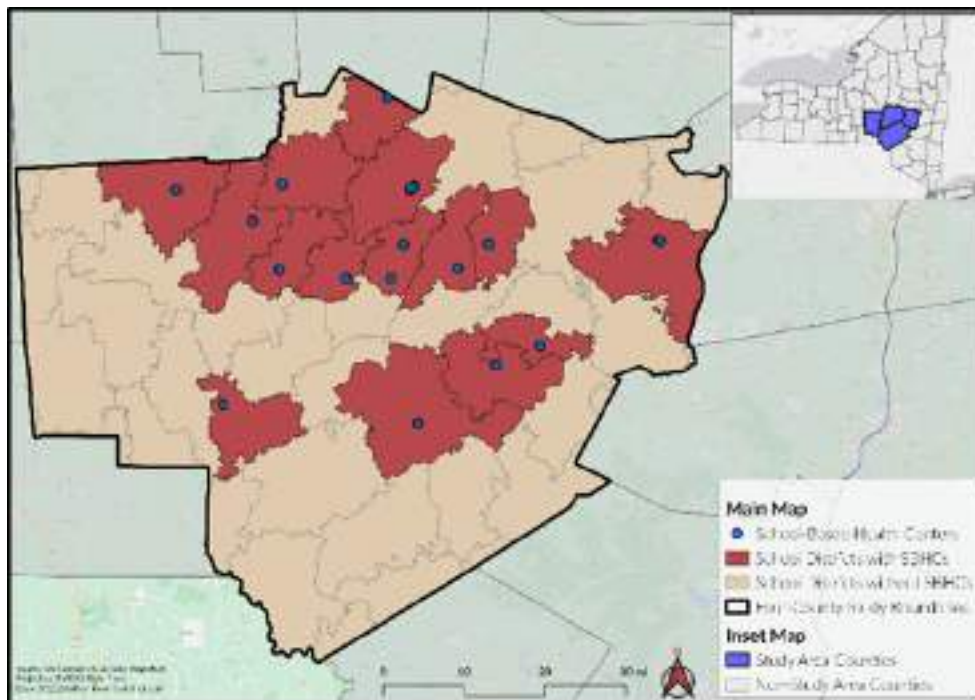
V. School-Based Health Centers and the Health of Rural Students

Lead: Wendy Brunner
Email: Wendy.Brunner@Bassett.org

School-Based Health Centers provide access to comprehensive health care to students in the schools they serve. BRI has been collaborating with researchers at Cornell University to conduct research on Bassett's network of SBHCs. Recent work includes comparing attendance rates for students in schools with SBHCs compared with rates for students in schools that do not have SBHCs.

In fall 2023, in collaboration with Cornell University, we were awarded a 5-year grant from the National Institutes of Health to study the impact of School-Based Health Centers on the health of rural students and their communities. Access to health care is a problem for rural youth in underserved communities. The proposed multi-institutional research project will explore the impact of School-Based Health Centers on health care utilization and outcomes, and evaluate cross-agency collaboration to address social determinants of health. The project will take a multilevel approach to build individual, institutional, community and policy partnerships to address health disparities of underserved rural youth.

*1R01MD018385-01A1 (National Institute on Minority Health and Health Disparities)
School Based Health Centers - An approach to address health disparities among rural youth
PI's: Sharon Tennyson, PhD, Wendy Brunner, PhD*



School districts in Chenango, Delaware, Otsego and Schoharie counties with and without SBHCs



Center for Rural Community Health

VI. Catironmack Environmental Health Collaborative

Lead: Wendy Brunner

Email: Wendy.Brunner@Bassett.org

The Catironmack Environmental Health Collaborative is building on the work of the Catironmack Intermountain Research Consortium that focused on COVID-19-related research, including COVID-19 vaccine hesitancy among college students and distress among public health workers during the pandemic. Alex Thomas, PhD, sociologist and demographer at SUNY Oneonta, leads the collaborative and organizational members include Bassett Research Institute, SUNY Oneonta and SUNY Polytechnic Institute. The region under study covers Chenango, Delaware, Fulton, Herkimer, Madison, Montgomery, Oneida, Otsego and Schoharie counties.

The Catironmack Environmental Health Collaborative is currently planning to conduct research on relationships between climate/environmental change and health as they relate to the Catironmack region. Three main areas of interest include tick-borne diseases, allergies, and pandemic preparedness (building on the previous pandemic-related research). Amanda Roome, PhD from NYCAMH and Wendy Brunner, PhD from BRI are participating.

<https://suny.oneonta.edu/places-institute/catironmack-environmental-health-collaborative>

Completed Projects in 2023:

I. Telehealth Research

Lead: Wendy Brunner

Email: Wendy.Brunner@Bassett.org

Over 2023, we continued analysis of a patient survey, electronic health records data and key informant interviews related to telehealth use. In October 2023, CRCH staff were asked to meet with a representative from Senator Schumer's office to talk about our telehealth research and discuss implications for policy following the end of pandemic era telehealth expansions.

Our findings are documented in a set of 4 manuscripts summarized below:

1. In a comparison of characteristics of rural adults who did and did not use telehealth, we found that telehealth users were more likely to be younger and have more education than those who didn't use telehealth. We also found, however, that when telehealth was available by telephone (audio-only), these differences disappeared.
2. In an analysis of trends in telehealth use through the acute phases of the COVID-19 pandemic, we found that telehealth use peaked in the first quarter of 2020 and leveled off at approximately 9% of appointments by 2022. The proportion of patients using the patient portal nearly doubled between January 2019 and January 2020.
3. In an exploration of dimensions of access that impact a person's ability to use and preference for telehealth, we found that telehealth access is extremely nuanced and is dependent on clinician and organization factors in addition to patient beliefs and capacity.
4. In an analysis to determine whether access to healthcare differs for patients who use telehealth compared with those who do not, we found that telehealth visits were associated with faster time to appointment in both departments that studied (endocrinology and behavioral health) and for both new and established patients. Telehealth use was also associated with lower no-show rates for both departments and for established patients.



Center for Rural Community Health



The LongROAD Study
Longitudinal Research on Aging Drivers

II. LongROAD Study

Lead: David Strogatz

Email: David.Strogatz@Bassett.org

The **Longitudinal Research on Aging Drivers (LongROAD)** Study is a multi-site cohort study of factors that predict the ability of older adults to continue driving safely (and factors that preserve quality of life when older adults reduce or discontinue driving). The LongROAD Study was funded by the American Automobile Association Foundation for Traffic Safety and enrolled 2,990 65-79 year old adult drivers between August 2015 and March 2017 at five sites (Cooperstown; Baltimore MD; Denver CO; Ann Arbor MI; San Diego CA). The study's lead institution for data management is the Mailman School of Public Health of Columbia University, and other participating institutions besides the Bassett Research Institute are Johns Hopkins University, the University of Colorado, the University of Michigan Transportation Research Institute and the University of California at San Diego.

Each of the five sites enrolled approximately 600 study participants from local primary care or specialty clinics and conducted full or limited follow-up assessments in alternating years. Information collected includes detailed measurements of physical and cognitive functioning, health conditions and medications, the condition and safety features of participants' vehicles, and driving-related behaviors. Data sources included in-person interviews and examinations, medical and motor vehicle department records, and GPS measurements of driving patterns from devices installed in each participant's primary vehicle or from an app installed on the participant's mobile phone. With the support of primary care providers, we recruited Bassett study participants from the primary care health centers in Cherry Valley, Cobleskill and Cooperstown and completed baseline assessments in March 2017.

The first peer-reviewed publication about the LongROAD Study appeared in 2017 in the journal *Injury Epidemiology* and the first symposium on the study was held in July 2017 at the World Congress of the International Association of Gerontology and Geriatrics in San Francisco, CA. Since then, findings from the LongROAD Study have been published in peer-reviewed journals or presented at conferences devoted to traffic safety, public health, behavioral medicine and gerontology. During 2023, five manuscripts with findings from the LongROAD Study were published or in press in *Artificial Intelligence in Medicine*, *Traffic Injury Prevention*, *Journal of the American Geriatrics Society* and *Journal of the American Medical Association Network Open* on the following topics:

- Use of objective driving data from older drivers to predict mild cognitive impairment and dementia
- Association of cannabis use with motor vehicle crashes and traffic stops among older drivers
- Interaction between benzodiazepines and prescription opioids on crash risk in older drivers
- Risk of motor vehicle crash for older adult drivers with attention deficit hyperactivity disorder
- Association of migraine headaches with motor vehicle crashes and driving patterns among older drivers

Manuscripts are also being prepared based on presentations at national meetings in 2023 on multiple topics from the LongROAD Study:

- Diabetes mellitus and hard braking events in older drivers
- Effects of depression and antidepressant medication on driving behaviors of the elderly
- Relationship of polypharmacy to hard braking events in older drivers
- Impact of driving cessation on health-related quality of life for older adults

Cooperstown was included as a LongROAD study site in order to provide comparison of the characteristics and driving experience for older adults from rural and urban environments. Results published in the *Journal of Rural Health* in 2020 showed that rural drivers assigned greater importance to driving and predicted greater impact that driving cessation would have on their lives. Ongoing analyses are assessing whether the predictors of driving behaviors and outcomes differ for the rural and urban participants in the LongROAD Study. Dr. Strogatz and investigators from other sites of the LongROAD Study have also begun collaborating with researchers from Urban Design 4 Health on opportunities to augment the LongROAD dataset with information about the census tract of study participants such as traffic density, neighborhood walkability and proximity to public transportation and destinations such as parks, supermarkets and pharmacies. The inclusion of these measures in analyses of LongROAD data are likely to increase our understanding of older adults' behaviors and decisions about driving.



Wilmot Cancer Center Collaboration

2023 was the first full year of CRCH's collaboration with The University of Rochester's Wilmot Cancer Center. **Research Coordinator, Mindy Robinson**, spent the year bringing Wilmot's resources to Bassett communities in Chenango, Delaware, Herkimer, Madison, Oneida, Otsego, and Schoharie Counties.

Recruitment for Wilmot's Yoga for Cancer Survivors (YOCAS) study wrapped up early in the year. An additional ten participants joined the cohort in 2023, for a total of 15 participants from the Bassett area (2022 and 2023 combined). Results were positive: yoga is a great assist for the troubled sleep of cancer survivors.



One of the biggest programs that Wilmot brings to Bassett patients is their smoking cessation program, called The Quit Center. Bassett hasn't had this sort of program in many years, so Mindy worked diligently to reinstate Bassett's REF100, the referral code for smoking cessation. To spread the word about this great program, she attended various department meetings, and worked to have The Quit Center advertised in Bassett's Bi-weekly Staff Bulletins, Provider Bulletins and Nursing Bulletins, and referrals quickly began to accumulate. In the community, Mindy continued to attend monthly meetings for various Community Groups, bringing information about the Quit Center to be disbursed in other organizations. More than 70 Bassett patients and staff have taken advantage of this 6-month, text message-based program which also includes 12 weeks of nicotine replacement therapy and daily support and encouragement.

Wilmot has found that the most effective means of improving Cancer Awareness and increasing understanding about the importance of Cancer Screenings is tabling in the community. Mindy tabled at 49 separate events throughout the year, including Bassett Health Centers during the winter months, expanding to Community Events like the Schoharie Maple Festival when the weather began to improve; getting involved in Community Events like The Marathon for a Better Life in Cobleskill, Community Health Events like Healthy Delaware in Walton, various summer County Fairs, and several Farmer's Markets.

Collaborations with area organizations led Mindy to participate in Bassett's Cancer Services Program's Colon Cancer Awareness Event at the Sangertown Mall, featuring Wilmot's giant inflatable colon. The giant colon is an excellent teaching tool, featuring images of healthy cells and cancerous cells.



Another teaching tool offered through Wilmot is a set of Pig's Lungs. One lung is pink and healthy, while the other is black with cancer caused by smoking (pig died of natural causes and then lungs were hooked to respirators, after death). Mindy joined Bassett's Lung Cancer Screening Program to bring the lungs to Oneonta High School for a Mini Health Fair during OHS's SADD Walk-A-Thon. The lungs were very impactful, making a big impression on the students. One last collaboration before the end of the year brought Mindy to partner with Tobacco Free-Communities and SUNY Oneonta. SUNY Oneonta used the Great American Smoke-Out to move the campus to a 100% Smoke-Free Community.



Mindy would like to work toward taking the Pig's Lungs into Middle Schools, to help educate students about the dangers of smoking. A second goal for 2024 is to create a consortium of area agencies to work together to plan and organize area events for the coming year.



Center for Clinical Research

Who We Are:

Clinical Scientist: Daniel Freilich, MD; Kanica Yashi, MD
Clinical Research Nursing Supervisor: Jennifer Victory, RN, CCRC
Clinical Research Nurses: Amanda Hasuly, RN, BSN, MS, CIP; Melissa Huckabone, RN, CCRC; Martina King, RN; Reccia McKenzie, RN



Our Work



Active Principal Investigators & Projects in 2023

- Eric Bravin, MD (Medical Oncology): Feasibility of Non-Operative Management of Rectal Cancer in a Rural Population (departmental support)
- Daniel Freilich, MD (Hospitalist): COMBO 1 – Influenza trial (EDT grant, departmental support & Genentech investigator initiated study funding)
- Mun Hong, MD (Cardiology) : VICTORION INCEPTION Lipid study (Novartis), VICTORION -2- PREVENT Lipid Study (Novartis); VICTORION -1- PREVENT Lipid Study (Novartis); Discover HCM Registry Study (Bristol Myers Squibb)
- Daniel Katz, MD (Cardiology): DAPA ACT HF (Dapaglifozin for inpatient CHF) (TIMI Study Group – Brigham & Women’s Hospital); multiple EDT & departmental supported research projects with Cardiology Fellows and Internal Medicine Residents
- Reginald Knight, MD (Spine/Orthopedic Surgery): Intracept for chronic low back pain (Relievent Medsystems)
- Dhananjai Menzies, MD (Cardiology): WARRIOR - Women’s Ischemia Trial to Reduce Events in Non-Obstructive CAD (University of Florida); COMPLETE-2: A randomized trial of physiology-guided versus angiography-guided nonculprit lesion (NCL) complete revascularization strategies and a large-scale observational study of Optical Coherence Tomography in patients with acute myocardial infarction and multivessel coronary artery disease (Population Health Research Institute)
- Anush Patel, MD (Medical Oncology): Weight, Anti Xa Levels, and Thromboprophylactic Enoxaparin (EDT grant)
- Kanica Yashi, MD (Hospitalist): Psychological Indicators in Candidates for Bariatric Surgery (departmental support); VALOR Lyme Vaccine Study (Pfizer)



Center for Clinical Research

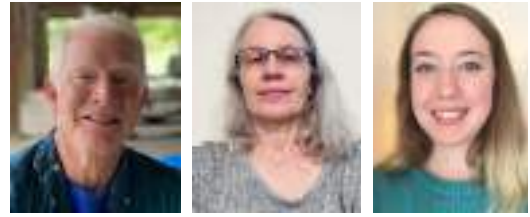
New Initiatives

- The COMBO 1 – Influenza trial has been expanded from being a single site study (Bassett only) to a multicenter trial. Baystate Medical Center in Springfield, MA and Oregon Health Science University in Portland, OR as sites for this study. BRI/BMC serves as both a study site and as the multicenter coordinator.
- Dr. Freilich has been working in collaboration with the Johns Hopkins Institute for Clinical & Translational Research Trial Innovation Network (JHU TIN) to develop two new projects:
 1. COMBO AC – COMbination therapy with Baloxavir and Oseltamivir for hospitalized patients with influenza – And Corticosteroids – the pragmatic COMBO AC Trial. MCATS grant application submitted but was declined. Currently working on protocol revisions and alternative funding sources.
 2. VPS - Vancomycin and Piperacillin/Tazobactam Nephrotoxicity or Pseudonephrotoxicity? A Pragmatic Adaptive Comparative Randomized Controlled Trial to Optimize Safety for Hospitalized Patients with Severe Infections. This proposed study has been submitted to the Patient- Centered Outcomes Research Institute's (PCORI) Broad Pragmatic Studies program. This funding decision is expected to be announced February-March 2024.
- Dr. Katz, in conjunction with Dr. Nathan Tucker (the Masonic Research Institute), and Dr. Bishesh Shrestha (Bassett Cardiology Fellow, FPGY3) submitted a Transformational Project grant proposal to the American Heart Association for the project titled Assessing Genetics and Cardiovascular Outcomes in Severe Hypertriglyceridemia in a Rural Founder Population. The project was not funded, but helpful reviews and comments were received. The study team is planning to resubmit to the AHA in 2024 for an alternative funding opportunity.



Center for Biostatistics

The **Center for Biostatistics** (CFB) provides study design assistance and data analysis in support of the overall mission of the Bassett Research Institute. The CFB collaborates with all the BRI centers and the Northeast Center for Occupational Health and Safety (NEC) as well as various other departments of Bassett Healthcare Network. The center is directed by Paul Jenkins, Ph.D. Dr. Jenkins completed his doctorate in statistics in 1993. Deputy director Laura Jones, PhD, joined the Center in February 2023. CFB staff include research investigator Melissa Scribani, PhD, research informatics analyst Nicole Krupa, BS, and data analyst Megan Kern, BA&Sc.



Who We Are:

Director: Paul Jenkins, PhD
Deputy Director: Laura Jones, PhD
Research Investigator: Melissa Scribani, PhD
Research Informatics Analyst: Nicole Krupa, BS
Data Analyst: Megan Kern, BA&Sc

Services provided by the CFB include writing methods and analysis sections of grant proposals, comprehensive data management, statistical analysis, interpretation of study results, database building, assistance with developing experimental designs, manuscript writing and review, drafting tables and graphic materials for poster and podium presentations, as well as mentorship of students ranging from bachelors through doctoral levels. The CFB also provides statistical and survey support to the Bassett Medical Center and Bassett Healthcare Network. Statistical analysis methods employed by the CFB include univariate and multivariable tests of association using parametric and nonparametric approaches; staff are trained in diverse analytic methods including linear and logistic regression and time-to-event analysis, data imputation, multilevel modeling, spatial analysis and machine learning techniques.

During 2023, center staff provided study design consultation and data analysis plans instrumental for multiple grant submissions to national and state-level funding agencies. Proposals included an application to the Patient-Centered Outcomes Research Institute (PCORI) for a large multi-site study of combination antibiotics and kidney function among severely ill inpatients as well as a trial of MOUD/MDMA assisted treatment at Bassett Medical Center. Assistance was also provided for a collaborative proposal with Cornell University on healthcare utilization outcomes associated with School-Based Health Center use, submitted to the National Institutes of Health (see also "Proposals" section on page XX for a full detailed list). Notably new this year were contributions led by Laura Jones, PhD for three collaborative funding proposals with the State University at Albany School of Public Health's department of Environmental Health Sciences and the Wadsworth Center at the New York State Department of Health (NYSDOH). These proposals focused on the long-term immunologic and reproductive health effects of exposures to polychlorinated biphenyls (PCBs) in the Akwesasne Mohawk population of northern New York as well as a study of persistent organic pollutants in Gulf War Illness veterans.

Proposal Highlight:

Environmental Health Disparities in the Akwesasne Mohawk Nation due to poly chlorinated biphenyl exposure

Submitted to: Environmental Protection Agency

Center Staff Contributor: Laura Jones, PhD

Collaborators: SUNY Albany School of Public Health Department of Environmental Health Sciences, Wadsworth Center NYSDOH, and SUNY Albany Center for Elimination of Minority Health Disparities

This three-year grant, currently under review, studies the long-term health effects of PCBs on members of the Akwesasne Mohawk community in northern New York. This region and this population in particular have been shown to have exceedingly high levels of exposure to PCBs and also experience disproportionately higher rates of chronic and autoimmune diseases compared to the general US population. This study proposes to investigate the relationship between low chlorinated volatile PCBs, found in sediments and soils, and levels of biomarkers for immunity and stress. A panel of metabolic markers including thyroid hormones, cholesterol and lipids will also be tested for relationships to PCB levels in this population.



Center for Biostatistics

Databases and Software: The center maintains numerous large databases relating primarily to research in obesity, diabetes, heart disease, hyperlipidemia, health behaviors, orthopedics and occupational injuries. CFB staff also conduct analyses on large national databases including the CDC's National Health Examination Survey (NHANES), the American College of Surgeons National Trauma Data Bank (NTDB), the Statewide Planning and Research Cooperative System data (SPARCS), the Healthcare Cost and Utilization Project (HCUP), the Center for Medicare and Medicaid Services (CMS), the National Violent Death Registration System (NVDRS) and the American Community Survey (ACS) among others. Ms. Krupa serves as the BRI's expert in data needs involving the Bassett Healthcare Network electronic medical record system (Epic), with Ms. Kern also holding Epic credentials. Center staff also maintain a secure research server housing Python® and the R® software language, and are proficient in Statistical Analysis Software (SAS) as well as a variety of survey/data collection platforms and database programs, including REDCap as the preferred HIPAA-compliant data management and data collection system. Staff supported electronic data collection for several continuing BRI studies as well as new studies. Online survey platforms were created for a multi-center clinical trial of combination antiviral therapy for influenza, for assessment of patient and provider engagement in clinical trial participation, for youth risk behavior surveillance and for numerous evaluation activities. Center staff also aided researchers with graphic design and data visualization using Canva and Tableau.

Clinical research and Research Institute activities:

This year, CFB staff supported projects undertaken by the Bassett Cardiology Fellowship program, including analysis of a cohort of subjects undergoing cardiac catheterization who have accrued six years of follow-up to test for associations between levels of cardiac biomarkers (podocan and Wnt-pathway molecules) and major adverse cardiac events, cancer incidence/recurrence and atrial fibrillation. CFB staff also assisted with a study of complications following transcatheter aortic valve replacement.

In addition, the CFB collaborated with a group of staff surgeons and surgical residents on studies using the National Trauma Data Bank including analysis of upper extremity and lower extremity vascular injuries and analysis of mortality outcomes associated with hospital volume and trauma level designation.

The Center for Biostatistics has also provided statistical analysis and co-authored several manuscripts focused on utilization of and access to telehealth services in support of the CRCH rural telehealth grant funded by NIHCM. Data analysis and a series of infographics were also provided for a multi-year study of practitioner and nurse well-being.

Publications: CFB staff contributed to 12 peer-reviewed manuscripts, published in journals of chronic disease, occupational health, safety research, transgender healthcare, health services research, digital health, environmental health sciences, mathematics and surgical medicine. The CFB staff contributed to several abstracts presented at national and international meetings hosted virtually and in-person during 2023. These included the International Society for Agricultural Safety and Health (ISASH) conference, the American Public Health Association (APHA) annual meeting, the American College of Cardiology (ACC) annual meeting, the Infectious Diseases in Adults (IDSA) conference, the International Society for Environmental Epidemiology (ISEE) conference, International Society of Exposure Science (ISES) conference and the Pediatric Hospital Medicine (PMH) conference.

Scholarly activities: Center staff supported several ongoing research projects with trainees within Bassett Medical Center and through collaborating institutions. Staff assisted a Columbia-Bassett medical student with data analysis and reporting for a survey of physicians on the management of spine surgery patients with osteoporosis. Deputy director Laura Jones also precepted a Masters level student at the Columbia University Mailman School on an epidemiological study of gun-related violent deaths, providing study design, data procurement, dataset assembly and statistical analysis assistance. In addition, Dr. Jones advised three PhD students at the SUNY Albany School of Public Health: two thesis projects related to environmental air pollutants (such as volatile organic compounds, acetaldehyde, carbon monoxide and particulate lead) and related impacts on respiratory health and cardiovascular disease, and one on dietary glyphosate exposure and its relation to metabolic syndrome.



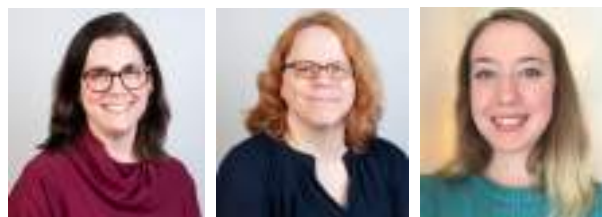
Center for Evaluating Rural Interventions

Who We Are:

Lead: Melissa Scribani, PhD

Analysts: Nicole Krupa, BS; Megan Kern, BA&Sc

Investigators: Pamela Milkovich, PhD; Liane Hirabayashi, MA (not pictured)



The **Center for Evaluating Rural Interventions** (CERI) conducts internal evaluations as well as external evaluations commissioned under contract varying in scope from BRI-specific projects, to multi-county New York State-funded projects, to federally-funded multi-institutional grants. CERI provides services including refining evaluation question(s), partnering in program planning, creating systems that incorporate measurement and real-time reporting, and assisting stakeholders in understanding data and writing evaluation sections for grants. CERI uses a variety of evaluation techniques including logic models, timelines, focus groups, social network analysis, cost analysis, surveys and data visualization to conduct our evaluations and share findings with stakeholders.

Program evaluations can be about developing an intervention, assessing its implementation, measuring the impact or outcome(s) of a policy or program, or providing accountability and oversight. When you want to know if a program, intervention or special project works in real world settings, call an evaluator. Stakeholders use evaluation findings to inform decisions about whether to continue, expand, or end a program. Funders use evaluation results to decide whether to continue funding future programs.

CERI takes a developmental, or formative, approach to program evaluation. CERI uses brief feedback reports to allow multiple stakeholders to track progress and make adjustments as implementation proceeds. That approach equates to maintaining an active role in program development and implementation by working closely with program directors and staff to understand what the objectives of the program are, how the program is being implemented, whether the program is doing what it is supposed to be doing, and what results are being generated by the program. Perhaps most importantly, evaluation seeks to know: can the results be attributed to the program? CERI's multi-faceted strategies can be useful in answering that question.

2023 Projects

I. Northeast Center (NEC) for Occupational Health and Safety in Agriculture, Forestry and Fishing

The **Northeast Center for Occupational Health and Safety (NEC) for Agriculture, Fishing and Forestry (AFF)**, is an education, research, and injury prevention center funded by the National Institute for Occupational Safety and Health (NIOSH). NEC aims to reduce occupational injuries in agriculture, forestry, and commercial fishing (AFF) sectors in the Northeastern US, from Maine through West Virginia. NEC has been awarded funding in five-year cycles, with the most recent cycle starting in September 2022. (visit <https://necenter.org/> or read their 2023 Year in Review for more information).

For the past 7 years, the NEC Planning and Evaluation (P&E) core led by CERI utilized a combination of evaluation approaches to create a comprehensive picture and story of the impact of NEC activities on AFF outcomes in the Northeast (NE) region. These approaches include utilization focused techniques (logic models, theory of change, etc.), community-based participatory methods (surveys, interviews, etc.), realist techniques (use of existing data, cost analysis, etc.), and developmental evaluation (conceptual framework, responding to emerging needs and industry trends, etc.).



Center for Evaluating Rural Interventions

In 2023, CERI continued to collect data from the NEC scientific projects in order to track project progress and document intermediate outcomes as well as success stories. On a quarterly basis, CERI surveys all principal investigators to track and report results for timeline adherence, outputs and impacts. CERI meets monthly with NEC staff in order to review performance targets, such as publications, and to track success stories, presentations, and awards. Solutions to timeline delays and recruitment issues are discussed at these Evaluation and Planning (E&P) meetings. This is how NEC improves or modifies program designs, addresses barriers, assures accountability and allows for mid-course corrections. Quarterly reporting also highlights NEC's professional relationships that enable translation from research into practice.



In 2023, CERI collected data for a social network analysis (SNA) of the Northeast Center to better understand the collaborative relationships developing in this funding cycle and to quantify the range of professional disciplines represented by the NEC network. This analytic method involves surveying all NEC intramural and extramural partners on the interactions that they have had with fellow partners over the prior six-month period. This information is then used to create a visual representation of contacts between individuals, called a sociogram. SNA metrics are also used to identify particularly strong or weak areas of a network, to detect critical key players in the network or to note whether smaller sub-networks are being formed. This analysis is ongoing and illustrations of the network will be shared with NEC investigators and scientific advisors to assess potential areas for expansion or strengthening of partnerships.

II. Gender Wellness Center (GWC)

The **Gender Wellness Center (GWC)** is a nationally recognized, rural-based interdisciplinary center that offers medical, mental health, and surgical care to transgender individuals of all religions, ages, sexual orientations, and ethnicities. They also offer advocacy, research, and training.



The mission of the GWC is to bring trans-affirming health care from the margins to the mainstream by offering transgender health care from within a primary care practice. The GWC's gender-affirming services are embedded within the Susquehanna Family Practice at FoxCare, and as such, it is a unique model for delivering transgender health care. Dr. Carolyn Wolf-Gould leads medical services, Susan Turrell, PhD leads mental health services, and Dr. Elizabeth Lax leads surgical services. In October 2023, a longitudinal health-related quality of life study of youth receiving care at the GWC was published in the journal *Transgender Health* (Title: "Two-year follow-up study of health-related quality of life among transgender and gender expansive youth receiving gender-affirming care"). CERI staff is also assisting GWC/Susquehanna Family Practice on a patient needs assessment survey related to social determinants of health and adverse childhood experiences (ACEs), due to be distributed to adult patients in early 2024.



Center for Evaluating Rural Interventions

III. Otsego County System of Care and LEAF Council on Alcoholism and Addiction



During autumn 2023, CERI and the Center for Biostatistics assisted the **Otsego County System of Care** and the **LEAF Council on Alcoholism and Addiction** to collect data on youth health and risk behaviors among Otsego County high school students. The Youth Risk Behavior Survey (YRBS) was developed by the Centers for Disease Control in 1990 to monitor health risk behaviors that contribute to the leading causes of death, disability and social problems among youth. Focused on students in grades 9-12, this questionnaire collects information on dietary behaviors, physical activity, sexual behaviors, substance use (including alcohol, tobacco, e-cigarettes and other drugs), feelings of depression and experiences with violence. Rates of overweight and obesity are also calculated. YRBS data is a valuable tool in priority planning for schools and community service providers, and allows for tracking of local rates over time and comparisons to state and national data. The Bassett Research Institute has supported YRBS administration in several counties in our region since the late 1990s. The 2023 Otsego County YRBS collected more than 1,300 responses from ten school districts. Next steps in this project will be data analysis, report generation and presentation of results to community stakeholders.



Columbia-Bassett Medical School Student Research



COLUMBIA UNIVERSITY
College of Physicians and Surgeons



Bassett Healthcare Network
Bassett Medical Center

COLUMBIA-BASSETT PROGRAM

Narrative Summary Highlights for 2023

Our research program published five papers and placed two others under review. Two papers, both published in the *Early Childhood Education Journal*, addressed the challenge of high turnover among early childhood education (ECE) professionals. We found that ECE professionals who reported higher workplace spirituality and the presence of work calling had lower intention to leave their current program. These two papers, along with one under review, are the last in a series of 13 papers that our research program has published over the past decade on the health and well-being of the ECE workforce. This year we also published two papers demonstrating the association between teacher connection and adolescent well-being. One of these papers, published in the *Journal of Early Adolescence*, was co-authored by the three Columbia-Bassett students who worked with us in the summer of 2022. Since 2018, we have published six papers (using four different study samples including almost 93,000 participants) demonstrating that childhood connection with adults (parents or teachers) is associated with flourishing. The most recent of these papers was accepted in December for publication in *Pediatrics*. Finally, we continued our collaboration in developing and delivering the Life Experiences Curriculum to the Columbia-Bassett students, a process we described in a manuscript that we wrote and submitted during the summer of 2023 with the assistance of a Columbia-Bassett student.

Peer-Reviewed Publications

[\[LINK TO MYBIBLIOGRAPHY AT NCBI\]](#)

[\[LINK TO GOOGLE SCHOLAR CITATIONS\]](#)

* denotes role as senior author

† denotes student mentee (master's or doctoral student, post-doctoral fellow, medical student or resident)

1. **Whitaker RC**, Dearth-Wesley T, Herman AN. The association of childhood parental connection with adult flourishing and depressive symptoms. *Pediatrics*. (in press)
2. Dearth-Wesley T, Herman AN, **Whitaker RC**. Teacher connection and student perspective-taking and their association with school belonging among adolescents in 62 countries. *Int J Adolesc Youth*. 2023;28(1):2254136. DOI: 10.1080/02673843.2023.2254136.
3. **Whitaker RC**, Dearth-Wesley T, Herman AN, **Benz TL†**, **Saint-Hilaire SA†**, **Strup D†**. The association between teacher connection and flourishing among early adolescents in 25 countries. *J Early Adolesc*. 2023. [published online ahead of print July 23, 2023]. DOI: 10.1177/02724316231190828.
4. Herman AN, Dearth-Wesley T, **Whitaker RC***. The association between early childhood education professionals' perception of workplace spirituality and their intention to stay in their current program. *Early Child Educ J*. 2023. [published online ahead of print July 11, 2023]. DOI: 10.1007/s10643-023-01506-7.
5. Herman AN, Dearth-Wesley T, **Whitaker RC***. The association between work as a calling and turnover among early childhood education professionals. *Early Child Educ J*. 2023. [published online ahead of print February 8, 2023]. DOI: 10.1007/s10643-023-01450-6.

Articles under Review

1. **Whitaker RC**, **Payne GB†**, O'Neill MA, Brennan MM, Herman AN, Dearth-Wesley T, Weil HFC. Trauma-informed undergraduate medical education: a pathway to flourishing with adversity by enhancing psychological safety.
2. Dearth-Wesley T, Herman AN, **Whitaker RC**. Relationships matter: how to prioritize and cultivate relational health within the early childhood education community.

Presentations

Invited Lectures (presented by Robert C. Whitaker, MD, MPH)

1. Childhood emotional neglect: reframing its relationship to adult well-being. Research Grand Rounds. Bassett Research Institute, Cooperstown, NY, October 11, 2023 (with Tracy Dearth-Wesley, PhD, MPH and Allison N. Herman, MEd, MPH).

Medical Student Summer Research Mentorship

Summer 2023: Georgia Payne, Columbia-Bassett Program [Trauma-informed medical education]



Publications

- 1) Sasaki N, **Jones LE**, Morse GS, Carpenter DO, On Behalf of the Akwesasne Task Force on The Environment. Mixture Effects of Polychlorinated Biphenyls (PCBs) and Three Organochlorine Pesticides on Cognitive Function in Mohawk Adults at Akwesasne. *Int J Environ Res Public Health*. 2023 Jan 9;20(2):1148. doi: 10.3390/ijerph20021148. PMID: 36673903; PMCID: PMC9859591.
- 2) Di X, Yin Y, Fu Y, Mo Z, Lo SH, DiGuseppi C, Eby DW, Hill L, Mielenz TJ, **Strogatz D**, Kim M, Li G. Detecting mild cognitive impairment and dementia in older adults using naturalistic driving data and interaction-based classification from influence score. *Artif Intell Med*. 2023 Apr;138:102510. doi: 10.1016/j.artmed.2023.102510. Epub 2023 Feb 20. PMID: 36990588.
- 3) Adeyeye TE, **Jones LE**, Yeung E, Mendola P, Lawrence DA, Lin S, Bell EM. Effects on neonatal immunoglobulin concentrations by infant mode of delivery in the upstate KIDS study (2008-2010). *Am J Reprod Immunol*. 2023 Apr;89(4):e13688. doi: 10.1111/aji.13688. Epub 2023 Feb 22. PMID: 36788284.
- 4) McCue-Weil L, Knight M, Driscoll M, **Jenkins P**, Sorensen J. A Case Study on the Practical Use of Low-Fidelity Modeling to Mitigate the Spread of COVID-19 Amongst the Underserved Farmworker Community. *Mathematica (N Y)*. 2023;2(1):223-241. doi: 10.1007/s44007-023-00043-4. Epub 2023 Feb 22. PMID: 36852263; PMCID: PMC9946281.
- 5) **Brunner W**, **Pullyblank K**, **Scribani M**, **Krupa N**, **Fink A**, **Kern M**. Determinants of Telehealth Technologies in a Rural Population. *Telemed J E Health*. 2023 Oct;29(10):1530-1539. doi: 10.1089/tmj.2022.0490. Epub 2023 Mar 6. PMID: 36877537.
- 6) Davis S, Betz ME, Hill LL, Eby DW, Jones VC, Mielenz TJ, Molnar LJ, **Strogatz D**, Clancy K, Li G, DiGuseppi CG. Associations of cannabis use with motor vehicle crashes and traffic stops among older drivers: AAA LongROAD study. *Traffic Inj Prev*. 2023;24(4):307-314. doi: 10.1080/15389588.2023.2180736. Epub 2023 Mar 20. PMID: 36939676.
- 7) Carey MG, **Brunner WM**. Building Fruitful Collaborations. In: Nichols AL, Edlund J, eds. *The Cambridge Handbook of Research Methods and Statistics for the Social and Behavioral Sciences: Volume 1: Building a Program of Research*. Cambridge Handbooks in Psychology. Cambridge University Press; 2023:695-713. 25 May 2023. doi:10.1017/9781009010054.033
- 8) **Brunner WM**, **Pullyblank K**, **Scribani MB**, **Krupa N**, **Wyckoff L**. Remote delivery of self-management education workshops for adults with chronic pain, 2020-2021. *Chronic Illn*. 2023 Jun 8:17423953231181408. doi: 10.1177/17423953231181408. Epub ahead of print. PMID: 37291805.
- 9) Di Stefano L, Ram M, Scharfstein DO, Li T, Khanal P, Baksh SN, McBee N, Bengtson CD, **Gadomski A**, Geriak M, Puskarich MA, Salathe MA, Schutte AE, Tignanelli CJ, **Victory J**, Bierer BE, Hanley DF, **Freilich DA**; Pandemic Response COVID-19 Research Collaboration Platform for ACEi/ARB Pooled Analyses. Losartan in hospitalized patients with COVID-19 in North America: An individual participant data meta-analysis. *Medicine (Baltimore)*. 2023 Jun 9;102(23):e33904. doi: 10.1097/MD.00000000000033904. PMID: 37335665; PMCID: PMC10256351.
- 10) **Whitaker RC**, Dearth-Wesley T, Herman AN, Benz TL, Saint-Hilaire SA, Strup DD. (2023). The Association Between Teacher Connection and Flourishing Among Early Adolescents in 25 Countries. *The Journal of Early Adolescence*, 0(0). 2023 Jul 23. <https://doi.org/10.1177/02724316231190828>
- 11) Scott E, Luschen K, Hansen-Ruiz C, **Krupa N**, Hirabayashi L, Graham J, Jensen N, **Jenkins P**. Factors associated with injury among Maine logging workers. *Am J Ind Med*. 2023 Oct;66(10):866-875. doi: 10.1002/ajim.23518. Epub 2023 Jul 24. PMID: 37488955.
- 12) Sasaki N, Morse G, **Jones L**, Carpenter DO; Akwesasne Task Force on the Environment. Effects of mixtures of polychlorinated biphenyls (PCBs) and three organochlorine pesticides on cognitive function differ between older Mohawks at Akwesasne and older adults in NHANES. *Environ Res*. 2023 Nov 1;236(Pt 2):116861. doi: 10.1016/j.envres.2023.116861. Epub 2023 Aug 9. PMID: 37562737.
- 13) Liang Z, Chihuri S, Andrews HF, Betz ME, DiGuseppi C, Eby DW, Hill LL, Jones V, Mielenz TJ, Molnar LJ, **Strogatz D**, Li G. Interaction between benzodiazepines and prescription opioids on incidence of hard braking events in older drivers. *J Am Geriatr Soc*. 2023 Dec;71(12):3744-3754. doi: 10.1111/jgs.18544. Epub 2023 Aug 11. PMID: 37566203.



Publications

- 14) MacMillan Uribe AL, Demment M, Graham ML, Szeszulski J, Rethorst CD, Githinji P, Nelson ME, **Strogatz D**, Folta SC, Bailey RL, Davis JN, Seguin-Fowler RA. Improvements in dietary intake, behaviors, and psychosocial measures in a community-randomized cardiovascular disease risk reduction intervention: Strong Hearts, Healthy Communities 2.0. *Am J Clin Nutr.* 2023 Nov;118(5):1055-1066. doi: 10.1016/j.ajcnut.2023.09.003. Epub 2023 Sep 17. PMID: 37717638; PMCID: PMC10636233.
- 15) Laaman K, Patel H, Chaudhary A, Hellenthal N, Monzon J, Ocegüera S, **Scribani M**, Bordley J IV. Comparing Colonoscopy Quality Indicators between Surgeons and Gastroenterologists in a Rural Healthcare System. *Science Repository.* doi:10.31487/j.SCR.2023.04.01
- 16) Liu Y, Chihuri S, Mielenz TJ, Andrews HF, Betz ME, DiGuseppi C, Eby DW, Hill LL, Jones V, Molnar LJ, **Strogatz D**, Li G. Motor Vehicle Crash Risk in Older Adult Drivers With Attention-Deficit/Hyperactivity Disorder. *JAMA Netw Open.* 2023 Oct 2;6(10):e2336960. doi: 10.1001/jamanetworkopen.2023.36960. PMID: 37792374; PMCID: PMC10551766.
- 17) **Pullyblank K, Krupa N, Scribani M, Chapman A, Kern M, Brunner W.** Trends in telehealth use among a cohort of rural patients during the COVID-19 pandemic. *Digit Health.* 2023 Oct 3;9:20552076231203803. doi: 10.1177/20552076231203803. PMID: 37799503; PMCID: PMC10548799.
- 18) Madani NA, **Jones LE**, Carpenter DO. Different volatile organic compounds in local point source air pollution pose distinctive elevated risks for respiratory disease-associated emergency room visits. *Chemosphere.* 2023 Dec;344:140403. doi: 10.1016/j.chemosphere.2023.140403. Epub 2023 Oct 11. PMID: 37832881.
- 19) **Gadomski A, Scribani MB, Tallman N**, O'Bryan J, Wolf-Gould Ch, Wolf-Gould Ca. Two-Year Follow-Up Study of Health-Related Quality of Life Among Transgender and Gender Expansive Youth Receiving Gender-Affirming Care. *Transgender Health.* Online ahead of print 2023 Oct 17. doi:10.1089/trgh.2022.0165
- 20) Pongdee T, **Brunner WM**, Kanuga MJ, Sussman JH, Wi Cl, Juhn YJ. Rural Health Disparities in Allergy, Asthma, and Immunologic Diseases: The Current State and Future Direction for Clinical Care and Research. *J Allergy Clin Immunol Pract.* 2023 Nov 25:S2213-2198(23)01299-0. doi: 10.1016/j.jaip.2023.11.030. Epub ahead of print. PMID: 38013156.
- 21) **Pullyblank K, Scribani M, Krupa N, Chapman A, Kern M, Brunner W.** Exploring Multiple Dimensions of Access to and Preferences for Telehealth Use. *Telemed Rep.* 2023 Dec 8;4(1):348-358. doi: 10.1089/tmr.2023.0049. PMID: 38098780; PMCID: PMC10719637.
- 22) Sasaki N, **Jones LE**, Carpenter DO. Fish consumption and omega-3 polyunsaturated fatty acids from diet are positively associated with cognitive function in older adults even in the presence of exposure to lead, cadmium, selenium, and methylmercury: a cross-sectional study using NHANES 2011-2014 data. *Am J Clin Nutr.* 2023 Dec 16:S0002-9165(23)66303-8. doi: 10.1016/j.ajcnut.2023.12.007. Epub ahead of print. PMID: 38110038.
- 23) DiGuseppi CG, Johnson RL, Betz ME, Hill LL, Eby DW, Jones VC, Mielenz TJ, Molnar LJ, **Strogatz D**, Li G. Migraine headaches are associated with motor vehicle crashes and driving habits among older drivers: Prospective cohort study. *J Am Geriatr Soc.* 2023 Dec 22. doi: 10.1111/jgs.18719. Epub ahead of print. PMID: 38133994.
- 24) Dzikowicz DJ, Saoji SB, Tam WC, **Brunner W**, Carey MG. (2023) Firefighter Death due to Cardiovascular Events from 1990-2021: A State-by-State Analysis Using a National Database. *Workplace Health & Safety.* **In press.**



Presentations

Pullyblank, K., & Arnold, C. *Diabetes: Through the eyes of the patient*. Nursing Grand Rounds, Bassett Medical Center, Cooperstown, NY. January 2023.

Shrestha B, Bathini T, Thangjui S, Gopal S, Panchal A, **Scribani M, Krupa N, Victory J**, Katz D. *Comparison of Atherosclerotic Cardiovascular Disease Risk at Different Triglyceride Levels*. American College of Cardiology Annual Scientific Session & Expo Together with World Congress of Cardiology (ACC.23), New Orleans, LA. March 2023.

Shrestha B, Bathini T, Thyagaturu H, Gopal S, Thangjui S, Panchal A, **Krupa N, Scribani M, Victory J**, Dogra M, Katz D. *Correlation of Thyroid Replacement Therapy with Development of Atrial Fibrillation in an Elderly Population*. American College of Cardiology Annual Scientific Session & Expo Together with World Congress of Cardiology (ACC.23), New Orleans, LA. March 2023.

Pullyblank, K. & Atav, S. *Diabetes: A study of the rural profile, self-management behaviors, and health outcomes*. Podium presentation at 2023 New York State Public Health Partnership Conference, White Plains, NY. April 2023.

Freilich D, Hanley D, **Jenkins P**, Riesenfeld E, Kleinmaeier M, Raja A, Afridi S, Khan A, **Scribani M, Jones L, Krupa N, Kern M, Victory J**. *Vancomycin and Piperacillin/Tazobactam (VPT) Nephrotoxicity vs. Pseudonephrotoxicity: The VPT Patient Safety (VPS) Randomized Controlled Trial*. Infectious Diseases in Adults (IDSA) 2023, Harvard Medical School, Virtual. May 2023.

Carrabba J, Milkovich P, **Scribani M**. *Assessing Long-Term Impacts of Agricultural Safety Education in New York Old Order Mennonite Schools*. International Society for Agricultural Safety and Health (ISASH) Conference, Tampa, FL. June 2023.

Pullyblank, K. *The relationship between rural culture and diabetes self-management beliefs and behaviors*. Podium presentation at 2023 International Rural Nursing Conference, Johnson City, TN. July 2023.

Shine, A., House, S., Ralston, S., **Kern, M.**, Hall, M., Harrison, W. *Association between hospital characteristics and low-value care delivery at US Children's Hospitals*. 2023 Pediatric Hospital Medicine Conference (PMH23), Philadelphia, PA. August 2023.

Zhang K, **Jones L**. *The Urban Exposome and Social Determinants in CARDIA*. International Society of Exposure Science (ISES), Chicago, IL. August 2023.

McAdam J, **Jones L**, Bell E. *Exogenous predictors of legacy PFAS concentrations in the general US population: NHANES 1999-2018*. International Society for Environmental Epidemiology (ISEE), Kaosieung, Taiwan. September 2023.

Pullyblank, K., Henderson, C., Fingado, P., Flynn, J., Chapman, A., Parker, M., Wyckoff, L. & Brunner, W. *Expanding reach and engagement in chronic disease self-management programming in the post-pandemic era: A rural healthcare system's experience*. Poster presentation at 2023 APHA meeting, Atlanta, GA. November 2023.

McAdam, JM, **Jones L**, Bell E. *Biomarker and body measure determinants of PFAS concentrations in the general US population: NHANES 1999-2018*. APHA meeting, Atlanta, GA. November 2023.

Pullyblank, K. *How to keep "rural" from getting lost in translation*. UNYTE Scientific Session: Advancing Translational Science in Rural Health Research. Virtual. November 2023.



Presentations



CCR nurse Reccia McKenzie, RN, at the Victorion2Prevent Study Investigator Meeting, March 2023.



CCR's Jennifer Victory, RN, CCRC, at the ACRP gathering in Dallas, April 2023.



CRCH staff Wendy Brunner, PhD, and Kristin Pullyblank, PhD, RN, representing the BRI at the APHA Annual Meeting in Atlanta, GA, November 2023.



Media Coverage

- 1) Bassett's NYCAMH Helps Farmers Keep Farming Safely. BassettWorks. January 4, 2023. <http://bhn.bassett.org/bw/Pages/Bassett%E2%80%99s-NYCAMH-Helps-Farmers-Keep-Farming-Safely.aspx>
- 2) The Digital Divide: BRI Study into Telehealth Releases Findings. BassettWorks. February 16, 2023. <http://bhn.bassett.org/bw/Pages/The-Digital-Divide-.aspx>
- 3) Digital Markers Near-Perfect for Predicting Dementia. Columbia University. February 23, 2023. <https://www.publichealth.columbia.edu/news/digital-markers-near-perfect-predicting-dementia>
- 4) Advocates push for more funding for farm safety programs. Spectrum News. March 23, 2023. <https://spectrumlocalnews.com/nys/central-ny/news/2023/03/23/why-advocates--farmers-say-underfunded-safety-programs-put-agricultural-workers-at-risk->
- 5) Erika Scott Named "Peer Reviewer of the Year 2023" by the Journal of Agromedicine. BassettWorks. March 28, 2023. <http://bhn.bassett.org/bw/Pages/Erika-Scott-Named-Peer-Reviewer-of-the-Year-by-the-Journal-of-Agromedicine.aspx>
- 6) Bassett Research Institute's Research Celebration Week Returns. BassettWorks. April 10, 2023. <http://bhn.bassett.org/bw/Pages/Bassett-Research-Institute%E2%80%99s-Research-Celebration-Week>Returns.aspx>
- 7) Bassett Research Institute's Research Celebration Week A Huge Success! BassettWorks. April 24, 2023. <http://bhn.bassett.org/bw/Pages/-Bassett-Research-Institute's-Research-Celebration-Week-A-Huge-Success!.aspx>
- 8) School-based health clinics benefit rural NYS communities. Cornell University. August 15, 2023. <https://news.cornell.edu/stories/2023/08/school-based-health-clinics-benefit-rural-nys-communities>
- 9) Bassett Thinks Globally, Acts Locally with International Partnership with Sweden's Umeå University. BassettWorks. August 24, 2023. <http://bhn.bassett.org/bw/Pages/Bassett-International-Partnership-with-Um%C4%97a-University.aspx>
- 10) Officials, Farm Community Highlight Importance of Farm Safety. Morning AgClips. September 21, 2023. <https://www.morningagclips.com/officials-farm-community-highlight-importance-of-farm-safety/>
- 11) Strong Link Found Between ADHD And Car Crashes In Older Drivers. Forbes. October 10, 2023. <https://www.forbes.com/sites/tanyamohn/2023/10/10/strong-link-found-between-adhd-and-car-crashes-in-older-drivers/?sh=7fe097a64b5b>
- 12) Helping Older Adults Age Well in Rural America. Commonwealth Fund. November 9, 2023. <https://www.commonwealthfund.org/publications/2023/nov/helping-older-adults-age-well-rural-america>
- 13) NYCAMH Garners Praise from Gov. Hochul and Agriculture and Markets Commissioner Richard Ball. BassettWorks. November 14, 2023. <http://bhn.bassett.org/bw/Pages/NYCAMH-Garners-Praise-from-Gov.-Hochul-and-Agriculture-and-Markets-Commissioner-Richard-Ball.aspx>
- 14) Celebrating Rural Healthcare: Beyond the Exam Room. BassettWorks. November 17, 2023. <http://bhn.bassett.org/bw/Pages/Celebrating-Rural-Healthcare-Beyond-Bassett.aspx>



Research Grand Rounds

January 2023 - **No Grand Rounds held.**

February 21, 2023 - 12:00 noon - 1:00 pm

Title: "'On Feirm Ground': Exploring and supporting farmer wellbeing, perspectives from Ireland and New York"

Presenter: Conor Hammersley, PhD
Fulbright Student Scholar & Teagasc Walsh Scholar

Participants Viewed via Zoom: **43**

March 14, 2023 - 12:00 noon - 1:00 pm

Title: "Infectious Diseases Research at Bassett"

Presenter: Daniel Freilich, MD

Participants Viewed via Zoom: **38**

April 11, 2023 - 12:00 noon - 1:00 pm

Title: "Unpacking the Untold Burden of Agricultural Injury: The Impact on Patients, Families, and Communities"

Presenter: Erika Scott, PhD
Deputy Director, NYCAMH/NEC

Participants Viewed via Zoom: **33**

May 9, 2023 - 12:00 noon - 1:00 pm

Title: "Defining the Digital Divide: Implications for Improving Access to Health Care"

Presenter: Wendy Brunner, PhD
Director for the Center for Rural Community Health

Participants Viewed via Zoom: **30**

June 14, 2023 - 12:00 noon - 1:00 pm

Title: "Tick Talk: Ticks and Tick-Borne Diseases in Dairy & Livestock Workers in Southern Vermont"

Presenter: Amanda Roome, PhD
Research Scientist, NYCAMH/NEC

Participants Viewed via Zoom: **47**

July 11, 2023 - 12:00 noon - 1:00 pm

Title: "Multi-disciplinary teaming for development of occupational safety interventions"

Presenter: Leigh McCue-Weil, PhD
Professor, George Mason University

Participants Viewed via Zoom: **33**



August 8, 2023 - 12:00 noon - 1:00 pm

Title: "The Umea Bassett Research Collaborative: Overview and Oppurtunities for the Future"
Presenter: Melissa Scribani, PhD, and Kristina Lindvall, PhD
Bassett Research Institute and Umea University, Sweden

Participants Viewed via Zoom: **30**

September 12, 2023 - 12:00 noon - 1:00 pm

Title: "Interim Analysis: What it is, and what it Ain't"
Presenter: Paul Jenkins, PhD
Director, Center for Biostatistics

Participants Viewed via Zoom: **27**

October 10, 2023 - 12:00 noon - 1:00 pm

Title: "Childhood Emotional Neglect: Reframing its Relationship to Adult Well-being"
Presenters: Robert Whitaker, MD, MPH, Allison N. Herman, MEd, MPH, and Tracy Dearth-Wesley, PhD, MPH
from the Columbia-Bassett Research Program

Participants Viewed via Zoom: **61**

November 14, 2023 - **No Grand Rounds held.**

December 12, 2023 - 12:00 noon - 1:00 pm

Title: "Obesity in rural adults: an eye towards prevention - Insights from Central New York and Northern Sweden"
Presenter: Melissa Scribani, PhD
Center for Biostatistics, Bassett Research Institute

Participants Viewed via Zoom: **41**

Missed a presentation? Good news - they are all recorded!
You may find the recording under Grand Rounds on the Vbrick Recording System:

<https://bassett.rev.vbrick.com/#/guest>

Please use Password **929876** to play video

If you need to share with those who are external to Bassett, they may view using the same steps above.

Thank you to all of our presenters from this past year. We look forward to more in 2024!



Research Celebration Week 2023

For the first time since 2019, the Bassett Research Institute celebrated the return of their Research Week in April of 2023!

Bassett Research Institute's **Research Celebration Week** was held from April 18 – April 21. The week-long exhibit was held in the Bassett Medical Center's Clinic lobby and provided an opportunity to inform and update caregivers, patients, and the public on the varied projects, ongoing studies, and research accomplishments at Bassett. The poster presentations were as follows:

- **Tuesday, April 18** – Northeast Center for Occupational Health and Safety (NEC)/New York Center for Agricultural Medicine and Health (NYCAMH)
- **Wednesday, April 19** – Bassett Research Institute
- **Thursday, April 20** – Medical Residents and Cardiology Fellows
- **Friday, April 21** – Nursing

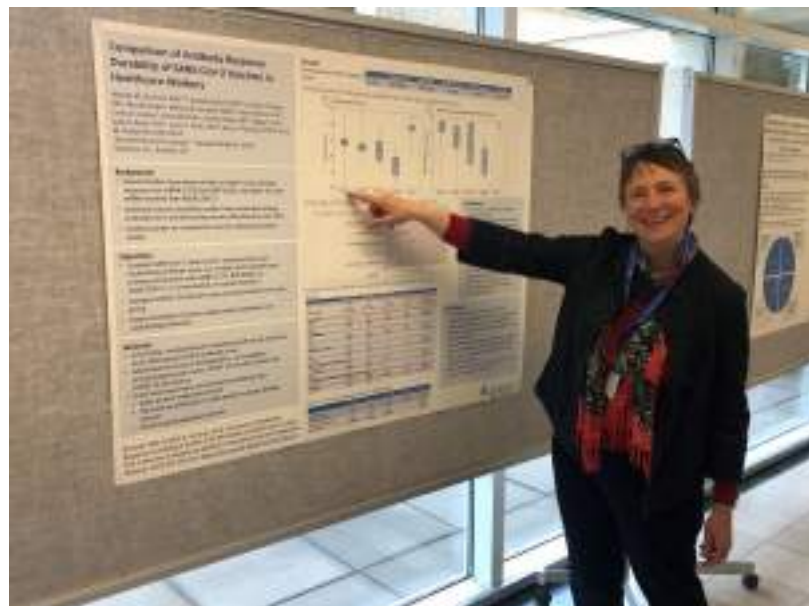
Posters were displayed starting at 8:00 a.m. each day, and presenters were available from 11:00 a.m. – 1:00 p.m. to answer questions about their work.

The event was a huge success and the Bassett Research Institute is grateful to all the presenters who enthusiastically shared their work and to all the caregivers who stopped by to learn more!



Medical residents displayed their research work and shared their findings with interested parties.

Bassett Research Institute's Wendy Brunner, PhD, with a poster detailing the results of a COVID-19 antibody study



The Umeå Bassett Collaborative



In August of 2023, the Bassett Research Institute hosted a week-long symposium to celebrate and build upon a thirty-year partnership with Umeå University's Department of Epidemiology and Global Health. Umeå University, located in Västerbotten County in the north of Sweden, is one of the country's largest institutions of higher education and is recognized internationally for its leadership in research and excellence in education. The Department of Epidemiology and Global Health (EpiGH), a division of the Faculty of Medicine, is a multidisciplinary teaching environment that is renowned in international public health research and program implementation. EpiGH draws students and researchers from all over the world with a shared mission to contribute to equitable and sustainable improvements in health and welfare across the globe.

In 1994, faculty from the Bassett Research Institute and EpiGH recognized common concerns of elevated cardiac disease risk in Bassett's catchment region and Västerbotten county. This launched a three-decades long relationship that has grown to encompass work on chronic disease prevention, primary healthcare delivery, health behaviors, injury prevention, and program implementation.

During the August symposium, BRI researchers and faculty members from Umeå EpiGH with expertise in chronic disease and injury prevention, primary care, health promotion, community interventions, and psychology discussed past successes from the collaborative work between the two institutions. Over the past thirty years, the partnership between BRI and Umeå University has produced 37 shared scientific publications, a number of grant-funded research projects, and four doctoral degrees earned by Bassett Research Institute staff. The first, earned by Anne Nafziger, MD in 2006, focused on cardiac disease and obesity patterns and prevention; Julie Sorensen earned her PhD in 2009, focused on injury prevention for farmers through promotion of tractor rollover protective devices; Pam Milkovich earned her PhD in 2019 studying the translation of injury prevention research into practice; and Melissa Scribani earned her PhD in 2023, focused on rural obesity and factors that promote a healthy weight in rural adults.

A major objective of the August visit was to identify opportunities to continue the collaboration between Bassett and Umeå University in the coming years. A number of topic areas for cooperation were identified, including research on child and adolescent health in rural communities, with an enhanced focus on youth mental health. This work brings together researchers, health practitioners, and clinical psychologists from the SALUT Program, a health initiative for children and adolescents in northern Sweden, and Bassett's School-Based Health Program. Other areas explored for future collaboration include digital healthcare delivery (telehealth) for rural populations, the continued study of obesity-related chronic disease outcomes and obesity prevention in rural communities. Maintaining the educational exchange between EpiGH and BRI through seminars, coursework, joint publications and support of graduate students will also continue to be a priority for the collaborative.

Past accomplishments and ideas for the path forward were highlighted at an evening seminar that brought together partners from Bassett's Board of Trustees, Bassett practitioners, network leaders in youth healthcare delivery, research collaborators and Bassett Healthcare Network's President and CEO, Dr. Tommy Ibrahim. Among the evening's events was a recognition by Dr. Ibrahim acknowledging the instrumental contributions that Umeå EpiGH colleagues have made to education and research at the Bassett Research Institute over the past three decades.



The Umeå Bassett Collaborative



Bassett Research Insitute and NYCAMH/NEC staff with Umeå University visitors, August 2023

Presentation of a commemorative plaque to Dr. Lars Weinehall, recognizing the contributions of Umeå colleagues to the BRI.

The plaque is displayed in Bassett Medical Center's Fieldstone Building.



Bassett's CEO, Board of Trustees members, and Umeå colleagues at the evening reception.



Congratulations, Drs. Scribani and Pullyblank!

The Bassett Research Institute is proud to share that two of our experienced research staff completed their PhDs over the past year.

Melissa Scribani, PhD, is a statistician and research scientist with the Center for Biostatistics. She successfully completed her PhD defense in March with Umeå University in Umeå, Sweden. Dr. Scribani's dissertation, "Insights on weight maintenance and impacts of obesity for two rural populations in the United States and Sweden," was livestreamed from the Umeå campus on March 3, 2023.



Kristin Pullyblank, PhD, RN, is a research investigator with the Center for Rural Community Health. Kristin successfully defended her dissertation and earned her PhD at Binghamton University on March 29, 2023. Dr. Pullyblank's dissertation, "Deciphering Diabetes: A Study of the Rural Profile, Health Beliefs, Self-Management Behaviors, and Health Outcomes," was well-received by the committee. Many staff from the Research Institute gathered to watch the livestream via Zoom.



Congratulations, Dr. Scribani and Dr. Pullyblank!
We are very proud of you and look forward to your continued contributions to the Research Institute.



Staff News and Updates

BRI Interns:



Ireland Gable



Ariadne Hodgson



Michaela Parker

Ireland Gable joined the Center for Rural Community Health as a summer intern in May 2023. She returned to the University of Rochester in the fall.

Ariadne Hodgson joined the Center for Rural Community Health for the second year as a summer intern in May 2023. She continued her undergraduate studies at McGill University in the fall.

Michaela Parker joined the Center for Rural Community Health as a graduate student intern in fall 2023. She is currently working on her masters in Public Health at Binghamton University and will be with the BRI through 2024.

Staffing Changes:



Catherine Gilmore departed the Research Institute in December 2023, beginning a new role at Foxcare in their Anticoagulation Clinic.



Amanda Hasuly joined the Clinical Research team in October 2023, working as a Clinical Research Coordinator.



Laura Jones joined the Biostatistics team in February 2023, where she currently serves as Deputy Director.



Nancy Tallman, Senior Evaluation Coordinator with CERI, retired in March 2023 after over 25 years with the Research Institute.



Beth Utter joined the BRI in August 2023 as the new Coordinator, Department Operations, and is also working with the IRB team.



Kanica Yashi, MD, joined the Center for Clinical Research as a Clinical Scientist.



