



Bassett Healthcare Network
Research Institute

2024 Year in Review

**Committed to
impactful research
in clinical and
rural community
health.**



TABLE OF CONTENTS

TABLE OF CONTENTS

| | |
|-------------------------------------------|----|
| A Note from the Administrative Director | 3 |
| Institutional Review Board | 4 |
| Research OSP/Network OGM | 5 |
| Center for Rural Community Health | 6 |
| Center for Clinical Research | 11 |
| Center for Biostatistics | 13 |
| Center for Evaluating Rural Interventions | 15 |
| The Umeå Bassett Collaborative | 17 |
| Staff Updates | 20 |
| Research Celebration Week 2024 | 20 |
| Research Grand Rounds | 20 |
| Publications | 21 |
| Presentations/Media Coverage | 21 |

The Bassett Research Institute Mission

The Bassett Research Institute conducts research to understand and improve the health and well-being of individuals and rural populations. We develop strategies to improve health care delivery, prevent illness, and manage chronic disease in support of the Bassett Healthcare Network's mission.

DIRECTOR'S LETTER

In 2024, the Bassett Research Institute (BRI) continued to build upon the successes and collaborations formed in prior years. This past year, BRI staff saw 19 peer review publications accepted as well as submitting 7 grant applications, which included a large multi-center PCORI application. A second large multi-center PCORI application has been prepared and will be submitted in early 2025.

The Center for Rural Community Health (CRCH) led multiple projects focused on rural health in children, caregivers, firefighters, chronic disease management, and cancer treatment and prevention. CRCH staff accomplished this by building on collaborations with Cornell, UCSF, the University of Nebraska, and the University of Rochester, as well as bolstering various community partnerships.

The Center for Clinical Research (CCR) supported projects by clinicians, residents, and students as well as preparing and submitting the previously mentioned multi-center PCORI grant with a second in the works. The core support programs at the BRI including Research Administration, Institutional Review Board (IRB), the Center for Biostatistics (CFB), and the Center for Evaluating Rural Interventions (CERI) continued to provide support to all research in the organization.

While we are still searching for a new director, the dedicated and skilled staff at the BRI endeavor to advance our mission of conducting research to understand and improve the health and well-being of individuals and rural populations.

Looking back on 2024, I am amazed at the resilience and dedication of our staff and look forward to new opportunities and challenges in 2025.



A handwritten signature in black ink, appearing to read 'Stephen Clark', with a long, horizontal flourish extending to the right.

Stephen Clark, BS
Interim Director

Who We Are



Wendy Brunner, PhD
Chair



Heidi Johnson, CIP
Program Manager



Beth Utter, BS
Coordinator Dept.
Operations



Stephen Clark, BS
Administrative
Director



Melinda
Hasbrouck, MBA
Business Manager



Director
Stephen Clark, BS



Business Manager
Melinda Hasbrouck, MBA

The **Institutional Review Board (IRB)** is comprised of twelve voting members and eleven alternate members of varying backgrounds, in addition to the Chair of the Board. The Board is charged with providing a complete review of research activities commonly conducted by investigators within the network. The Board meets at least once per month on the first Tuesday of every month. It is responsible for conducting an initial review process, a continuing review process and for maintaining a record of all IRB activities, in accordance with the HHS regulation for the Protection of Human Subjects as defined by the Code of Federal Regulations (45 CFR 46 and 21 CFR 50, 56). One member resigned and three new members came on the committee during the course of the year.

At the end of 2024 there were 86 active protocols approved for research activities within the network. During 2024, eight new protocols were approved; four were clinical trials and four were based on non-experimental study designs to analyze existing datasets or use qualitative or quantitative methods for collection and analysis of primary data. During 2024, 22 projects qualified for exemption. Fourteen protocols were completed and terminated in the course of 2024.

The IRB Office has standing agreements and protocols to engage the service of external IRBs when Bassett investigators are collaborators in multi-site industry-sponsored or NIH-funded clinical trials; current partnerships include the National Cancer Institute's Central Institutional Review Board (CIRB), Advarra, WCG IRB, University of Rochester Research Subjects Review Board, University of Florida IRB and Brown University.

Two hundred and seventy-six administrative reviews were performed in 2024.

Other activities of the Board during the past year included:

Monitoring and reviewing the local occurrence of adverse events (0 during the 12 month period) and protocol deviations (2 during the 12 month period)

Reviewing numerous protocol amendments and modifications proposed to ongoing research studies (159 during the 12 month period)

Continuing education sessions for IRB members held during the course of the year included IRB considerations for reviewing research on psychedelic substances and what is the key information consideration of the reasons people do or do not take part in research.

The **Bassett Healthcare Network Office of Grants Management (OGM)** supports the submission of all Research Institute and NYCAMH grant applications and assists as requested with non-research applications for the network. The OGM provides support and guidance to Research Principal Investigators for all phases of post-award management, including management of contracts and sub-awards, quarterly and annual reporting and grant close out. The OGM monitors and maintains all state and federal grant submission and tracking platforms and assures that the organization remains in compliance with all state and federal regulations as they pertain to grant supported programs.

In 2024, OGM staff continues to work closely with the Director of Governmental Affairs, Finance, and the Friends of Bassett to address opportunities for the larger organization with regards to pre and post award grants management. The continued goal of this department is to support grant application development to increase overall external funding for the organization and to implement practices to significantly improve post-award management performance/compliance. Benefits to Research include a reduction in overall risk to the organization with regards to grants stewardship/compliance as well as significant support for collaborations and new opportunities within the organization.

The 35 grant applications submitted in 2024

| Principal Investigator/Project Director | Granting Agency | Application Title | Submission Date |
|------------------------------------------------------------------------------------|-------------------------------------------------------------------------------------|-----------------------------------------------------------------------------------------------------------------------------------------------------------|-----------------|
| Brunner, Wendy | UR CTSI | Characterizing vital signs among rural volunteer firefighters in New York | 1/8/2024 |
| St. Amand, Colt | NYS DOH | Trans Youth Thrive | 1/18/2024 |
| Hirabayashi, Liane (Sub of UC Davis) | EPA | Pesticide Educational Resources Collaborative 2.0 (PERC 2.0) | 2/1/2024 |
| Gibb, Bonita | HRSA | Integrated Geriatric Care Enhancement Program (IGCEP) at Bassett Medical Center | 2/26/2024 |
| Betrus, Lisa, Lewis, Carolyn, Kleinmaier, Matt | USDA | Increasing Access to Emergency Care at Bassett | 3/16/2024 |
| Betrus, Lisa, Lewis, Carolyn, Kleinmaier, Matt | USDA | Increasing Access to Emergency Care at Little Falls Hospital | 3/16/2024 |
| Betrus, Lisa, Lewis, Carolyn, Beers-Capraro, Kendra | Labor, HHS | Increasing Energy Efficiency & Patient Comfort at Bassett Medical Center | 3/16/2024 |
| Betrus, Lisa, Lewis, Carolyn, Beers-Capraro, Kendra | Labor, HHS | Increasing Energy Efficiency & Patient Comfort at Little Falls Hospital | 3/16/2024 |
| Lewis, Carolyn, MacDonald, Joan | USDA | Increasing Access and Safety in Rural Dentistry | 3/16/2024 |
| Betrus, Lisa, Lewis, Carolyn, Cohen, Scott, Johnson, Chris | NYS DOH | BMC's Cybersecurity Infrastructure Project | 3/28/2024 |
| Betrus, Lisa, Lewis, Carolyn, Vielkind, Jim | NYS DOH | Bassett Medical Center Transformation & Sustainability Plan | 4/19/2024 |
| Betrus, Lisa, Lewis, Carolyn, Charles, Deanna, Aiken, Tammy, Beers-Capraro, Kendra | NYS DOH | Increasing Access and Efficiency of Emergency and Behavioral Health Services at BMC | 4/22/2024 |
| Lewis, Carolyn, Oaks-Ferrucci, Susan | NYS DOH | Expanding Access to Rural Dentistry at O'Connor Hospital | 4/22/2024 |
| Roome, Amanda (Sub of Maine Coastal Fisherman) | NOAA | Microlearning for Young Fishermen's Wellness and Resilient Career Pathways | 4/30/2024 |
| Sorensen, Julie (Sub of University of Maine) | NIH | A Multi-Level Worker-guided Social Care Intervention to Address Pain Management in Maine's Rural Fishing Industries | 4/30/2024 |
| Lewis Carolyn, Beers-Capraro, Kendra | NYS Office of Children and Family Services / Dormitory Authority of the State of NY | Increasing Access to Childcare | 5/2/2024 |
| Freilich, Daniel | PCORI | COMbination therapy with Baloxavir and Osetamivir for hospitalized patients with influenza – And Corticosteroids – the pragmatic factorial COMBO AC Trial | 5/6/2024 |
| Scott, Erik | NYS DOL | Addressing Healthcare Disparities and Workforce Opportunities for Rural Logging Workers project | 6/18/2024 |
| Korytko, Timothy (Sub of Fred Hutchison Cancer Center) | NIH | A Multisite Randomized Controlled Trial of Ca-HELP-A to Improve Pain Self-Management among Older Adults with Cancer in Rural Settings | 7/5/2024 |
| Brunner, Wendy | NIH | Feasibility of using HPV vaccine video messages tailored for rural parents as part of clinical practice | 7/10/2024 |
| Pullyblank, Kristin | NIH | Rural Innovative Multi-sectoral Preventive Approaches Community Trial for Health Equity (Rural IMPACT for Health Equity) | 7/30/2024 |
| Lewis, Carolyn, Beers-Capraro, Kendra | NYS Empire State Development | Increasing Access to Childcare | 7/31/2024 |
| Sorensen, Julie | NIOSH | The IFISH Innovation Exchange Hub | 8/7/2024 |
| Sorensen, Julie (Sub of GMU) | CDC/NIOSH | Slip-Resistant Footwear for Commercial Fisherman | 8/8/2024 |
| Sorensen, Julie (Sub of TAMU) | CDC/NIOSH | Improving commercial fishers' mental health through socially assistive robotics | 8/22/2024 |
| Lewis, Carolyn, Oaks-Ferrucci, Susan | O'Connor Foundation | CT- Scanner Project | 8/24/2024 |
| Betrus, Lisa, Lewis, Carolyn, Metcalf, Kim, Belmont, Angela, Vielkind, Jim | NYS DOH | Increasing Access through Otsego County EMS Partnership & Noble Specialty Pharmacy | 9/10/2024 |
| Wyckoff, Lynae | Prevent Cancer Foundation | Enhanced Patient Navigation to Smoking Cessation Services | 9/10/2024 |
| Hammersley, Conor | Johns Hopkins | Navigating Industry Change: A Qualitative Study on Dairy Farm Consolidation and Farmer Mental Health in Upstate New York | 10/11/2024 |
| Hammersley, Conor | NOAA | Navigating the Tide: Exploring the Mental Health and Identity Impacts of Climate Change on Young Fishermen in the Northeast | 10/25/2024 |
| Sorensen, Julie (Sub of Cornell) | NY Farm Viability Institute | Applying Lean Management in Dairy to improve performance, engagement, safety, and efficiency | 10/25/2024 |
| Lewis, Carolyn, SBHC | NY Health Foundation | Mental health first aid Building Capacity to Address the Mental Health Needs of our Youth and Adults in Rural Central NY | 11/16/2024 |
| Wyckoff, Lynae | NYS DOH | Rural Health Education Network of Schoharie and Otsego Counties (RHENSO) | 12/3/2024 |
| Lewis, Carolyn, MacDonald, Joan | Mother Cabrini Health Foundation | Pathway to Excellence Program | 12/4/2024 |
| Scott, Erika | NIH NLM | Agriculture, Forestry and Fishing (AgFF) EMPOWER: Engaging Medical Staff and Patients in Occupational Health and Wellness with Electronic Resources | 12/11/2024 |

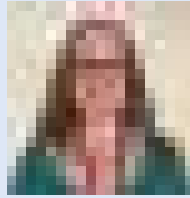
Who We Are



Wendy Brunner, PhD
Director



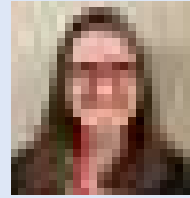
Kristin Pullyblank,
PhD, RN
Research Investigator



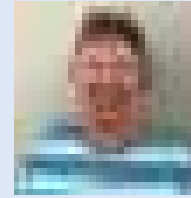
Mindy Robinson, BA
Research Coordinator



Amanda Chapman, BS
Research Assistant



Pamela Burch, BS
Research Assistant



Jenny Flynn, MS
Research Assistant



Caitlin Liberati, MA
Research Assistant



Lynae Wyckoff, MS
Senior Health Educator



Carleen Henderson
Health Educator



David Strogatz, PhD
Director Emeritus

The **Center for Rural Community Health** was established in 2011 to work with academic partners, state and local public health organizations, and Bassett Healthcare Network caregivers and practitioners to understand the health challenges affecting people in Bassett's catchment area and to design and test community-based strategies to address these challenges. In seeking to enrich health care access and opportunities for individuals, the Center was also charged with evaluating community health and social service resources as well as schools and local businesses to see what infrastructure already exists and can be built upon in collaboration with the Center. Major projects of the Center in 2024 reflect its ongoing commitment to these goals, with programs that notably span the full age range.



Improving access to fresh fruits and vegetables through a CSA program.

2024 PROJECTS

RHENSOM

To address the community-identified health needs within the region, the Rural Health Education Network of Schoharie, Otsego, and Montgomery Counties (RHENSOM) provided recommended evidenced-based programming and interventions. Key areas: improving access to farm fresh produce; providing nutrition education; and empowering adults to prevent and manage chronic conditions through enrolling in RHENSOM's Living Well self-management programs, diabetes prevention program, and Eat Healthy Be Active. New competitive application submitted in December 2024.



Increasing access to farm fresh produce for patients, employees, and community members.

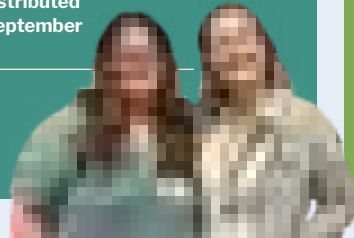
8 Farmer's Markets held
June to September

77 Community Supported
Agriculture participants
across **4** locations

534 Customers

8 Shares distributed
June to September

59 Fruit & vegetable
varieties offered



Living Well Self-Management

TOOLKITS AVAILABLE:
Diabetes
Chronic Pain
Chronic Disease
Thriving &
Surviving Cancer

Toolkits given to
16
community
organizations
for lending

LIBRARY SYSTEMS PARTICIPATING:
4-County
Mohawk Valley
Mid-York

76
toolkits given to
libraries for lending

177
toolkits given
to people

12
6-week workshops
held to support
self-management

12-month Living Well National Diabetes Prevention Program

75 sessions across **4** Zoom
and **2** in-person groups

53 people enrolled

"At the time, I no longer had the discipline required to exercise or eat healthy. With the group support, I got more confidence and got back on track."

--NDPP Zoom participant



6-week Living Well Eat Healthy Be Active CDC Program

24 sessions
66 people enrolled

"Excellent presentations, lots of helpful information to improve our eating habits."

--Participant from The Gathering Place at Cobleskill



Cornell Cooperative Extension Nutrition Education | RHENSOM sub-contractor

22 one-time events, engaging
1,200+ people

13 series, reaching **580** youth
& adults in Otsego, Schoharie &
Montgomery counties



2024 PROJECTS

School-Based Health Centers and the Health of Rural Children and Youth

In collaboration with Cornell University and funded with a grant from the National Institute on Minority Health and Health Disparities (PIs: Wendy Brunner PhD, Sharon Tennyson PhD), this 5-year research project is exploring the impact of school-based health centers (SBHCs) on rural youth. SBHCs are clinics located in schools that provide care to students at no out-of-pocket cost to families. Bassett Healthcare Network runs 22 SBHCs in 18 school districts in Otsego, Delaware, Schoharie and Chenango counties.

During 2024, the research team conducted 22 interviews and 3 focus groups with participants including Bassett staff, SBHC staff, school faculty, government officials and community agencies. In September, we held our first in-person advisory committee meeting. We also published articles related to asthma management in SBHCs and our overall research protocol. Team members presented our research at Cornell's Health Equity conference in April 2024, the School-Based Health Association annual meeting in June 2024 and at the American Academy of Pediatrics annual meeting in September 2024.



Caregivers Program

In collaboration with UCSF, The Family Caregiver Program is a pragmatic trial funded by the National Institutes of Health, IMPACT Collaborative. The purpose of this randomized pilot study is to determine the feasibility of implementing a workshop for caregivers into usual primary care settings. Study recruitment began in December 2024.

caregiverprogram.ucsf.edu



about **20%** of the US population lives in rural areas, but only **10%** of physicians practice there.

-- DOI: 10.1001/jama.2017.2609

2024 PROJECTS

Diabetes on Track

A three-year initiative (2022-2025) in collaboration with University of Nebraska Medical Center, College of Public Health (Dr. David Dzewaltowski, PI), Diabetes on Track explores a novel, paradigm-challenging process-oriented approach to rural whole-of-community diabetes care, prevention and education that embraces the complexity of community systems. In addition to continuing project implementation in two rural communities throughout 2024, the team was able to share preliminary findings with national audiences at several conferences, as well as publish two articles in peer-reviewed journals.



Firefighters with University of Rochester

Neural Network to Prevent Sudden Cardiac Death among Volunteer Firefighters in New York

Bassett Research Institute is collaborating with the University of Rochester School of Nursing on this UNYTE-funded project designed to identify changes in heart rhythms associated with increased risk for sudden cardiac arrest among firefighters (PI: Dillon J Dzikowicz PhD, RN, PCCN). The research team aims to enroll 90 firefighters in the study, with the objectives of (1) evaluating the effectiveness of an existing neural network at classifying arrhythmias using data collected from a wearable device and (2) re-designing the neural network for sudden cardiac arrest risk prediction.



Empowering individuals to quit smoking for a healthier life

CRCH has collaborated with The University of Rochester’s Wilmot Cancer Center for two full years now. Research Coordinator, Mindy Robinson, continues to bring Wilmot’s resources to Bassett Communities. Wilmot’s Quit Center, smoking cessation program, continued to grow and improve in Bassett in 2024. The addition of texting the word “Bassett” and a QR Code for self-enrollment has been very popular and empowering for community members that want to quit smoking. Mindy worked with Bassett’s Marketing Team to create our own Quit Center flyer and a screensaver placed in rotation to help disseminate information about the program. More than 80 Bassett patients and staff took advantage of the Quit Center in 2024.



The Marathon for a Better Life is a fundraising event held every year in Cobleskill. This year, CRCH partnered with Bassett’s Cancer Treatment Center to participate in the marathon. The two teams contributed roughly \$1,000 of the \$200,000+ that the Marathon raised this year. Other events in 2024 included, several Senior Health Fairs/Picnics and area Farmers’ Markets, Worcester Strawberry Festival, Little Falls Canal Celebration, Chenango Pride Fair, Colorscares Art Festival, and Sharon Springs Harvest Festival. Mindy also participated in Bassett’s “Cancer Survivors Day”, organized a “Breast Cancer Awareness Event”, and organized one of Bassett’s two “Shine A Light on Lung Cancer” Events, which featured Wilmot’s Giant Inflatable Lungs.



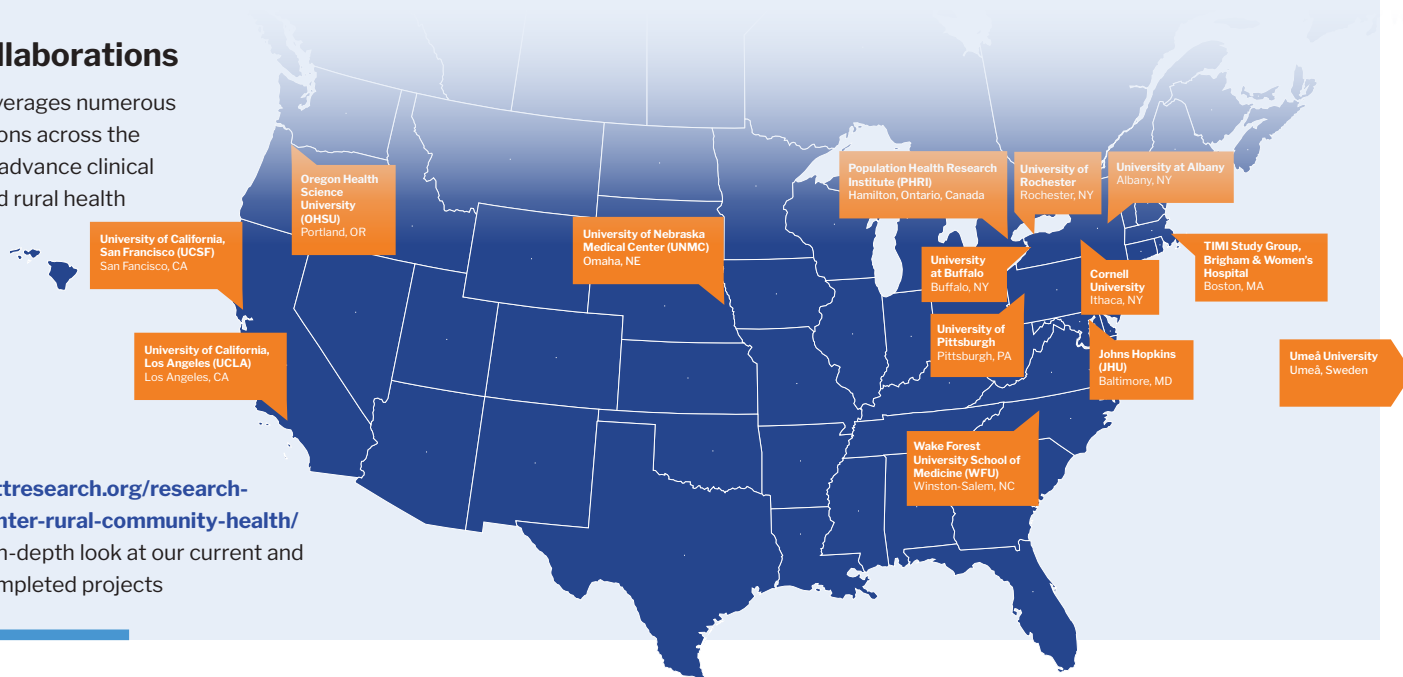
Young and old alike, are always amazed at the impact of the teaching tools Mindy brings into our

Bassett communities. The smoke damaged Pig’s Lungs being the most effective. For the second year in a row, Mindy support SUNY Oneonta’s efforts towards becoming a 100% tobacco-free campus by taking the Pig’s Lungs on the college’s “Great American Smoke Out” day. She also joined the Halloween festivities in two different schools this year where she connected with Students & Families, as well as teachers & staff, using the Pig’s Lungs to demonstrate the dangers of smoking and vaping.



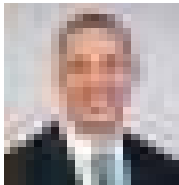
BRI Collaborations

The BRI leverages numerous collaborations across the country to advance clinical science and rural health research.



Visit bassettresearch.org/research-centers/center-rural-community-health/ for a more in-depth look at our current and recently completed projects

Who We Are



Daniel Freilich, MD
Clinical Scientist



Kanica Yahi, MD
Clinical Scientist



Jennifer Victory, RN,
BS, CCRC
Clinical Research
Nursing Supervisor



Amanda Hasuly, RN,
BSN, MS, CIP, RAC
Clinical Research
Nurse



Melissa Huckabone,
RN, CCRC
Clinical Research
Nurse



Martina King, RN
Clinical Research
Nurse



Reccia McKenzie, RN
Clinical Research
Nurse

What We Do

Industry Trials and Registries

Investigator Initiated Studies

Resident and Fellow Research Projects

Grant Funded Studies

Who We Serve

Study Participants

Local Investigators

Resident Physicians and Fellows

Collaborating Investigators from Other Institutions

Active Principal Investigators & Projects in 2023

Eric Bravin, MD (Medical Oncology): Feasibility of Non-Operative Management of Rectal Cancer in a Rural Population (departmental support)

Daniel Freilich, MD (Hospitalist): COMBO 1 – Influenza trial (EDT grant, departmental support & Genentech investigator initiated study funding)

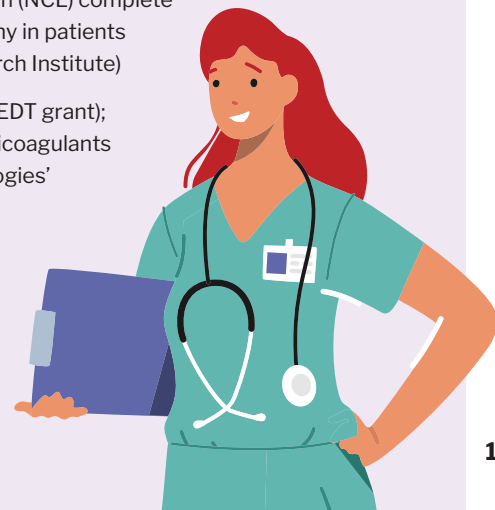
Mun Hong, MD (Cardiology) : VICTORION INCEPTION Lipid study (Novartis), VICTORION -2- PREVENT Lipid Study (Novartis); VICTORION -1- PREVENT Lipid Study (Novartis); Discover HCM Registry Study (Bristol Myers Squibb)

Daniel Katz, MD (Cardiology): DAPA ACT HF (Dapagliflozin for inpatient CHF) (TIMI Study Group – Brigham & Women’s Hospital); multiple EDT & departmental supported research projects with Cardiology Fellows and Internal Medicine Residents

Dhananjai Menzies, MD (Cardiology): WARRIOR - Women’s Ischemia Trial to Reduce Events in Non-Obstructive CAD (University of Florida); COMPLETE-2: A randomized trial of physiology-guided versus angiography-guided nonculprit lesion (NCL) complete revascularization strategies and a large-scale observational study of Optical Coherence Tomography in patients with acute myocardial infarction and multivessel coronary artery disease (Population Health Research Institute)

Anush Patel, MD (Medical Oncology): Weight, Anti Xa Levels, and Thromboprophylactic Enoxaparin (EDT grant); Multi-site Study for Evaluation of Clinical Ranges of Whole Blood Clotting Times of Patients on Anticoagulants and Verification of Measurement Precision of Liquid Quality Controls with the Perosphere Technologies’ PoC Coagulometer (Perosphere Technologies Inc.)

Kanica Yashi, MD (Hospitalist): Psychological Indicators in Candidates for Bariatric Surgery (departmental support); VALOR Lyme Vaccine Study (Pfizer)



New Initiatives

Dr. Freilich has been working in collaboration with the Johns Hopkins Institute for Clinical & Translational Research Trial Innovation Network (JHU TIN) to develop two new projects:

COMBO AC COMbination therapy with Baloxavir and Oseltamivir for hospitalized patients with influenza – and Corticosteroids – the pragmatic COMBO AC Trial. PCORI PLACER grant application submitted, but was not funded. Currently considering protocol revisions and resubmission.

VPS Vancomycin and Piperacillin/Tazobactam Nephrotoxicity or Pseudonephrotoxicity? A Pragmatic Adaptive Comparative Randomized Controlled Trial to Optimize Safety for Hospitalized Patients with Severe Infections. The Letter of Intent for this proposed study was submitted to the Patient- Centered Outcomes Research Institute’s (PCORI) Broad Pragmatic Studies program and was accepted for a full grant proposal submission. This will be submitted in January 2025.

Dr. Eric Riesenfeld was invited to collaborate with Dr. Daniels LaChant from University of Rochester Medical Center (URMC) to implement a pilot study looking at a remote pulmonary rehabilitation program for patients recently hospitalized for pulmonary embolism. The project, Home Rehabilitation After Acute Pulmonary Embolism –A Pilot Study at a Rural Health Center, has received IRB approval. It is hoped the study will launch in January 2025.

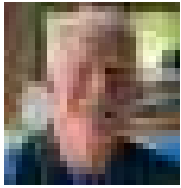
Drs. Brunner and Freilich, as well as the Center for Biostatistics, have been collaborating with Dr. Andrew Talal from the University of Buffalo on a data collection project looking at Hepatitis C care in a rural health system. A joint manuscript is in development. It is hoped information from this study will make a significant contribution to Dr. Talal’s planned PCORI submission in 2025.



The Center for Clinical Research is designed to maximize investigator efficiency and support every step of the research process.”



Who We Are



Paul Jenkins, PhD
Director



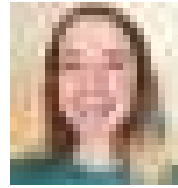
Laura Jones, PhD
Deputy Director



Melissa Scribani, PhD
Research Investigator



Nicole Krupa, BS
Research Informatics
Analyst



Megan Kern, BA&Sc
Data Analyst
(per-diem)

Providing essential services to enhance research outcomes

The Center for Biostatistics (CFB) provides study design assistance and data analysis in support of the overall mission of the Bassett Research Institute. The CFB collaborates with all the BRI centers and the Northeast Center for Occupational Health and Safety (NEC) as well as various other divisions of Bassett Medical Center and the Bassett Healthcare Network.

Services provided by the CFB include writing methods and analysis sections of grant proposals, comprehensive data management, statistical analysis, interpretation of study results, database building, study design, manuscript writing and review, preparing material for poster and podium presentations, survey development and analysis, as well as mentorship of students (bachelors through doctoral levels).

Grant proposals

During 2024, center staff provided study design consultation and analytic plans instrumental for grant submissions, including an application to the Patient-Centered Outcomes Research Institute (PCORI) for a large multi-site randomized controlled trial of combination therapy for hospitalized influenza patients. CFB staff also provided experimental design and analysis plans for a BRI Center for Rural Community Health application for a multi-level randomized trial of community-developed interventions to promote diabetes screening in rural regions, submitted to the National Institutes on Minority Health and Health Disparities. A collaborative proposal with SUNY Albany/University of Toronto/the Sage Colleges to study persistent organic pollutants among Gulf War Illness veterans was submitted to the Department of Defense.

Data procurement, assembly and management: During 2024, center staff developed data collection tools and managed data capture for more than a dozen studies with BRI and NEC investigators, cardiovascular fellows, medical trainees and nurse researchers. Several sophisticated electronic medical record-based research datasets were created by Ms. Krupa using EPIC® and analyzed by center staff. Notable projects included an eleven-year analysis of Hepatitis C testing and treatment patterns across the Bassett system in collaboration with the University at Buffalo, an investigation of advanced care directives for surgical patients at Bassett, and several others.

BRI and NEC Investigator Support

Center staff provided data management, dataset building and data analysis guidance for a collaborative grant with Cornell University studying associations between School-Based Health Center use and healthcare usage patterns. This study employs multiple EPIC-based datasets and integrates youth risk behavior survey data from the Bassett service region, the administration of which is coordinated within the CFB. With NEC, center staff led analysis and manuscript development for a novel benchmarking paper on optimization of machine learning algorithms for identifying occupational injuries in agriculture, forestry and fishing sectors using large administrative datasets. A complementary analysis of multiple imputation strategies



for missing data in occupational injury classification problems is underway. Analyses of sleep deprivation and adverse health outcomes among commercial fishermen and a baseline assessment of tick exposure on Vermont farms were also conducted this year.

Clinical Research Support

CFB staff supported the Bassett Cardiovascular Fellowship Program with several projects, including a cohort study of cardiology patients associating cardiac biomarkers (Podocan and Wnt-pathway molecules) with major adverse cardiac events and atrial fibrillation over 7 years of follow-up. Data collection tools, data management and analysis plans were developed by center staff for a study of the relationship between high dietary fat intake and myocardial infarction. A study of hemoglobin A1c trends and myocardial infarction among diabetic patients is also ongoing, for which a highly complex dataset of EPIC medical record data was constructed by Ms. Krupa. In addition, the CFB collaborated with staff surgeons and surgical residents on National Trauma Data Bank analyses of upper- and lower-extremity vascular injuries. Staff worked with surgical residents on two medical record-based projects of geriatric trauma patient outcomes as well as a qualitative study of colorectal cancer patients undergoing a watch-and-wait treatment protocol.

Scholarly activities

Laura Jones precepted three epidemiology graduate students from Columbia University's Mailman School; she advised a Master of Science student on a study of gun-related suicide and homicide mortalities in the Northeastern US using the National Violent Death Registration System and advised two Master of Public Health students on studies of youth suicidality and bullying using local (Otsego County) and national Youth Risk Behavior Survey (YRBS) data. Dr. Jones also advised two PhD students at the SUNY Albany School of Public Health. Ms. Krupa and Dr. Scribani advised a SUNY Upstate Medical University Doctor of Nursing Practice student on an evaluation of nurse and patient perspectives on bedside reporting. Center staff delivered two BRI research seminars and three statistical methods lectures to the cardiovascular fellows as well as two invited presentations on local YRBS results.

Publications and Presentations

Co-authored 8 peer-reviewed manuscripts published in journals of:

- Pediatrics
- Chronic Disease
- Digital Health
- Surgical Medicine
- Environmental Health Sciences

Co-authored 6 manuscripts under review at journals of:

- Obesity Surgery
- Occupational health
- Public Health Surveillance
- Environmental health sciences

Co-authored 9 abstracts presented at regional and national meetings:

- American College of Cardiology (ACC)
- Eastern Vascular Society (EVS)
- Cornell Center for Health Equity Symposium
- Columbia University APEx Symposium
- SUNY Albany Research Showcase



To realize equitable outcomes in health prevention efforts among rural communities, we must embrace the complexity and diversity of community systems and intervene at the system structure level.”

-- CRCH, Diabetes on Track

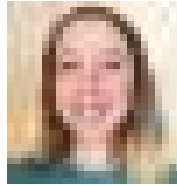
Who We Are



Melissa Scribani, PhD
Director



Nicole Krupa, BS
Analyst



Megan Kern, BA&Sc
Analyst



Pamela Milkovich, PhD
Investigator



Liane Hirabayashi, MA
Analyst

Overview

The Center for Evaluating Rural Interventions (CERI) conducts evaluation for BRI-specific projects, local and regional New York State-funded projects, and federally-funded grants. CERI assists programs in defining evaluation question(s), program planning, data measurement systems, data reporting and writing evaluation plans for grants. CERI uses techniques such as logic models, timelines, interviews, focus groups, social network analysis, surveys and data visualization to conduct evaluations and share findings with stakeholders.

Evaluation Programs

The Northeast Center for Occupational Health and Safety (NEC) is a federally-funded education, research, and injury prevention center that aims to reduce occupational injuries in agriculture, forestry, and commercial fishing (AFF) in the Northeastern US (www.necenter.org). As part of the NEC Planning and Evaluation Core, CERI works in collaboration with NEC investigators to create a comprehensive picture of the impact of NEC activities on AFF outcomes in the Northeast.

In 2024, CERI advised and assisted in the development of evaluation questions, data collection instruments and analyzed data for a number of NEC outreach activities. CERI conducted a social network analysis (SNA) of the Northeast Agricultural Safety and Health Coalition (NEASHC), a group of occupational safety educators and advocates, to determine the degree to which its members interact and to document how they use coalition programming and cooperate across states. Social network data is also being collected for the full NEC network annually to track the representation of disciplines, to identify strong or weak areas of interaction, to detect critical key players in the network and to identify formation of sub-networks.

In conjunction with RHENSOM, CERI partnered with the Cobleskill Campus Child Care Center (CCCCC or 5C) and Schoharie County Agricultural Development, SUNY Cobleskill and Cornell Cooperative Extension on a successfully funded planning grant from the USDA Patrick Leahy Farm to School Program. The grant will develop an action plan to bring locally produced foods and garden education to children aged 0-5. "We could not be more thrilled to be a recipient of a Farm to School grant," CCCCC Executive Director Christy Scott said, "here in Schoharie County, we are surrounded by farmland and have a rich agricultural heritage so we are excited to connect local producers to our early childhood program. We know that investing in the introduction of fresh and healthy foods at a young age and connecting students to where their food comes from will build lifelong healthy

OUR PARTNERS



Cornell Cooperative Extension
Schoharie and Otsego Counties



habits. We are looking forward to strengthening our relationships with community partners, farmers and advocates to provide more fresh, locally-sourced foods and garden education to the children that we serve.”

Dr. Scribani provided research oversight and led evaluation activities for this ongoing partnership. She developed surveys for CCCC staff and parents to assess interest and experiences in farm to school-related topics and conducted interviews with local producers, SUNY partners and community stakeholders alongside the project manager. Lynae Wyckoff, RHENSOM supervisor and Senior Health Educator, has provided support with strategy and meeting facilitation and serves on the project’s steering committee. Pamela Burch synthesized interview data and began a case study of Farm to Early Childhood Education programs. BRI staff have joined a Community of Practice on Farm to Early Childhood Education to connect with other programs across New York State.

This year, Dr. Scribani also collaborated with Dr. Carolyn Wolf-Gould on an assessment of social determinants of health and adverse childhood experiences (ACEs) among adult patients of the Susquehanna Family Practice/ Gender Wellness Center (GWC). The GWC, embedded within Susquehanna Family Practice, is a nationally recognized, rural-based interdisciplinary center that offers affirming medical, mental health, and surgical care to transgender and gender diverse (TGD) individuals. A total of 234 patients responded to the questionnaire, 43.2% of whom identified as TGD. Compared to cisgender patients, those identifying as TGD reported significantly greater concern about losing housing, difficulty getting food and lack of transportation. TGD patients reported higher numbers of ACEs than cisgender patients. Preliminary results from this study were presented by student Eliot Helicke at the New York State Department of Health-sponsored conference: Implementing Health Equity Competencies in Clinical Practice: Findings from the Health Equity Clinical Leadership Institute (October 21, 2024 | New York, NY and Virtual).

CERI, in partnership with the Otsego County System of Care and the LEAF Council on Alcoholism and Addictions, conducted data analysis and prepared reports of results from the Otsego County Youth Risk Behavior Survey (YRBS). Developed by the CDC to monitor dietary behaviors, physical activity, sexual behaviors, substance use (including alcohol, tobacco, e-cigarettes, other drugs), bullying, mental health and violence among high school students, YRBS data

is a valuable tool in priority planning for schools and communities. The Bassett Research Institute has supported local YRBS administration for more than 25 years, and in 2024, CERI and the Center for Biostatistics analyzed more than 1,300 survey responses from ten school districts in Otsego County. Results were shared via written reports as well as at a community forum of youth service providers (March 18, 2024) and at the Bassett School-Based Health team meeting (August 27, 2024).

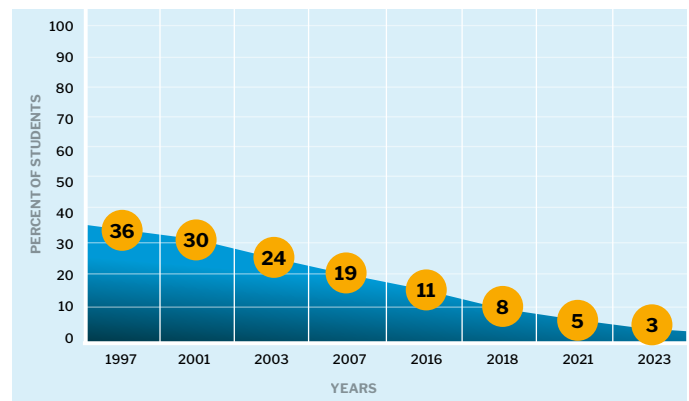
A preschool student “shops” for fresh produce in her classroom’s dramatic play area.



Percent of NEASHC members reporting how they have used materials from the coalition, organized by program topic



Percent of high school students reporting cigarette smoking has decreased dramatically since 1997 from 36% to just 3% in 2023 (Otsego County Youth Risk Behavior Survey data)



Overview

Researchers from BRI and NEC have continued to expand on a thirty-year partnership with Umeå University's Department of Epidemiology and Global Health in 2024. Umeå University, located in Västerbotten County in the north of Sweden, is recognized internationally for its leadership in research and excellence in education. The Department of Epidemiology and Global Health (EpiGH), a division of the Faculty of Medicine, is renowned in international public health research. Since the collaboration's inception in 1994, faculty from the Bassett Research Institute and EpiGH have worked together on studies of chronic disease prevention, primary healthcare delivery, health behaviors, injury prevention and program implementation leading to 37 shared scientific publications, several grant-funded research projects, and four doctoral degrees earned by Bassett Research Institute staff.

During 2024, researchers worked to refine common research goals for promoting the health of rural communities. In addition to monthly meetings, a week-long workshop (May 2024) was hosted by Umeå University and attended by BRI and NEC researchers to build upon shared priorities, including child and adolescent health with an enhanced focus on youth mental health. This work brings together researchers, health practitioners, and clinical psychologists from the SALUT Program, a health initiative for children and adolescents in northern Sweden, and Bassett's School-Based Health Program. On May 15, 2024, a hybrid-format joint seminar was held between EpiGH and Bassett entitled "Rural Health in Västerbotten and Upstate New York: Perspectives on Care for Children and Adolescents." A detailed overview of Bassett's School-Based Health program was provided by School-Based Health practitioners and nurse manager, including history, structure and the comprehensive care delivery model. Ongoing research at BRI and EpiGH related to the health of rural youth was also presented. The seminar was attended by 46 participants: 32 virtually and 14 in person at EpiGH. Attendees represented a wide range of disciplines, including municipal officials and decision-makers from rural Swedish communities and the Västerbotten County Council.

Other areas explored for future collaboration include digital healthcare delivery (telehealth) for rural populations, the continued study of chronic disease outcomes and obesity prevention in rural communities. Maintaining the educational exchange between EpiGH and BRI through seminars, coursework, joint publications and support of graduate students will also continue to be a priority for the collaborative.



4 of the **5**

**leading causes of
death in rural areas
are associated with
chronic disease.**

RuralHealthInfo.org

Research Days 2024

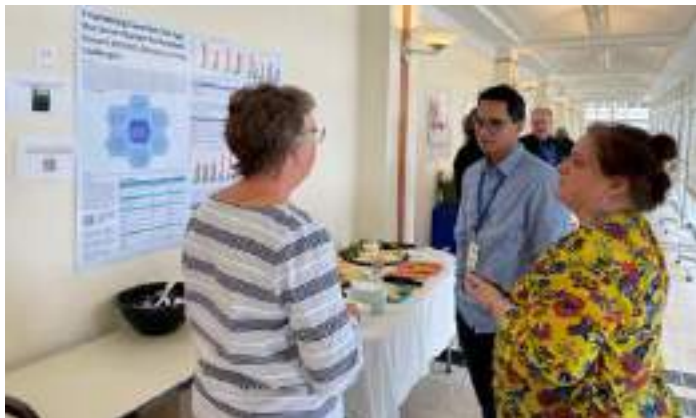
Bassett Research Institute's annual Research Days were held with great success on April 23 and April 24. With a multitude of posters in the Bassett Medical Center's Clinic lobby, the exhibit provided an opportunity to share or update caregivers, patients, and the public on the various projects, ongoing studies, and research accomplishments at Bassett. With refreshments available and an interactive raffle opportunity, the event was well-received by all.

The poster presentations were as follows:

April 23: Research from the New York Center for Agricultural Medicine and Health (NYCAMH) and Bassett Research Institute.

April 24: Research by Bassett's medical residents and nursing personnel.

The team at the Research Institute would like to thank everyone who participated in and stopped by the exhibit and looks forward to displaying more as part of next year's Research Days.



2024 Staff News and Updates

INTERNS

Ariadne Hodgson joined the Center for Rural Community Health for the third year as a summer intern in May 2024. She continued her undergraduate studies at McGill University in the fall.



Natalie Segina joined the Center for Rural Community Health as a summer intern in May 2024. She returned to SUNY Delhi in the fall.





BRI Retreat

On October 23, 2024, the Bassett Research team gathered in person at Farm Credit East for a full day retreat with facilitator Marcus Brooks. Marcus, an accomplished organizational leadership expert based out of Cornell University in Ithaca, led the group in a variety of team-building exercises and engaging discussions that helped foster a sense of camaraderie and interdepartmental connection within the Institute. As part of the day, a group lunch was provided by Stagecoach Coffee, and there was even a birthday celebration for BRI team members with October birthdays. We are looking forward to next year's retreat!



RESEARCH GRAND ROUNDS

Participants

| | |
|----------------------------------------------------------------------------------------------------------------------------------------------------------------------------------------------------------------------------------------------------------------------------|-----------|
| January 9, 2024- CANCELED | |
| February 13, 2024 - 12:00 noon – 1:00 pm Title: Research in the real world: When RCTs aren't possible (or ideal) Presenter: Pamela Milkovich, PhD Research Scientist, NYCAMH/NEC | 33 |
| March 5, 2024 - 12:00 noon – 1:00 pm Title: Cardiovascular Fellows Panel: Presentations for the American College of Cardiology Annual Meeting Presenter: Bishesh Shrestha, MD & Shwetha Gopal, MD | 36 |
| April 2, 2024 - 12:00 noon – 1:00 pm Title: Expanding our View of Occupational Health and Safety Presenter: Erika Scott, PhD Deputy Director, NYCAMH/NEC | 40 |
| May 7, 2024 - 12:00 noon – 1:00 pm Title: Get that mind of yours running on the flat ass calm: Mental health in commercial fisheries Presenter: Amanda Roome, PhD Research Scientist, Bassett Research Institute | 40 |
| June 4, 2024 - 12:00 noon – 1:00 pm Title: Community-Driven System Redesign for Rural Population Health: Moving Beyond Evidence-Based Interventions Presenter: Kristen Pullybank, PhD, RN | 46 |
| July 2, 2024 - 12:00 noon – 1:00 pm Title: Are We Lost? What is the Role of the Occupational Health and Safety Researcher in Tumultuous Times? Presenter: Julie Sorensen, PhD | 32 |
| August 6, 2024 - 12:00 noon – 1:00 pm Title: Teen Risk Behaviors in Otsego County: Current Trends and Community Perspectives Presenter: Melissa Scribani, PhD | 44 |
| September 3, 2024 - 12:00 noon – 1:00 pm Title: CANCELED Presenter: Laura Jones, PhD | |
| October 1, 2024 – 12:00 noon – 1:30 pm Title: School-Based Health Centers: An approach to address health disparities among rural youth Presenter: Wendy Brunner, PhD Director for the Center for Rural Community Health | 47 |
| November 5, 2024 – 12:00 noon-1:00 pm Title: Time Dependent Covariates and Recurrent Events Presenter: Paul Jenkins, PhD Director, Center for Biostatistics | 28 |
| December 3, 2024 - 12:00 noon – 1:00 pm Title: Objective injury risk assessment and innovative interventions in commercial fishing and forestry: Wearable sensors and Exoskeletons Presenter: Jay Kim, Ph.D., Associate Professor Texas A&M University | 38 |

Mielenz, T. J., Jia, H., DiGuseppi, C., Molnar, L. J., Strogatz, D., Hill, L. L., Andrews, H. F., Eby, D. W., Jones, V. C., & Li, G. (2024). Impact of driving cessation on health-related quality of life trajectories. *Health and Quality of Life Outcomes*, 22. <https://doi.org/10.1186/s12955-024-02231-4>

Isom CA, Baird S, Betz ME, DiGuseppi CG, Eby DW, Li G, Lee KC, Molnar LJ, Moran R, Strogatz D, Hill L. (2024). Association of depression and antidepressant use with driving behaviors in older adults: a LongROAD study. *Journal of Applied Gerontology*, 43(10),1485-1492. <https://doi.org/10.1177/07334648241238313>

Zhang X, Warner ME, Tennyson S, Brunner W, Wethington E, Sipple JW (2024) School-based health centers as an approach to address health disparities among rural youth: A study protocol for a multilevel research framework. *PLoS ONE* 19(5), e0303660. <https://doi.org/1371/journal.pone.0303660>.

Jian Q, Chihuri S, Andrews HF, Betz ME, DiGuseppi C, Eby DW, Hill LL, Jones V, Mielenz TJ, Molnar LJ, Strogatz D, Lang BH, Li G (2024). Association between polypharmacy and hard braking events in older adult drivers. *Accident Analysis and Prevention*, 204, Article 107661. <https://doi.org/10.1016/j.aap.2024.107661>

Liu D, Chihuri S, Andrews HF, Betz ME, DiGuseppi C, Eby DW, Hill LL, Jones V, Mielenz TJ, Molnar LJ, Strogatz D, Lang BH, Li G (2024). Diabetes mellitus and hard braking events in older adult drivers. *Injury Epidemiology*, 11. <https://doi.org/10.1186/s40621-024-00508-2>

Mielenz TJ, Jia H, DiGuseppi CG, Strogatz D, Andrews HF, Molnar LJ, Eby DW, Hill LL, Li G. (2024). Frailty and poor physical functioning as risk factors for driving cessation. *Frontiers in Public Health*, 12. Article 1298539. <https://doi.org/10.3389/fpubh.2024.1298539>. Published

Moran RJ, Baird S, DiGuseppi CG, Eby DW, Hacker S, Isom C, Jones V, Lee KC, Li G, Molnar LJ, Patrick R, Strogatz D, Hill L. (2024). Dietary supplement use is common in older adult drivers: An analysis from the AAA LongROAD study. *BMC Complementary Medicine and Therapies*, 24. <https://doi.org/10.1186/s12906-024-04623-x>

Pullyblank, K., Brunner, W., Strogatz, D., Manganello, J., & Massey, P. (2024). Developing HPV vaccine short video content for rural parents in upstate New York: A participatory method. *Preventive Medicine Reports*, 48. <https://doi.org/10.1016/j.pmedr.2024.102911>

Pullyblank, K., Rosen, M., Rogers, A. E., Wichman, C., Baron, M., & Dzewaltowski, D. A. (2024). Community-engaged systems for population health improvement: A novel approach to improve diabetes outcomes in rural communities. *Journal of Community Health*, 49(5), 798-808. <https://doi.org/10.1007/s10900-024-01376-z>

Pullyblank, K., Parker, M., Chapman, A., Fingado, P., Flynn, J., Henderson, C., Wyckoff, L., & Brunner, W. (2024). Implementing PDSA cycles to expand reach of self-management education in the post-COVID era. *American Journal of Health Education*. <https://doi.org/10.1080/19325037.2024.2365632>

Pullyblank, K., Krupa, N., Scribani, M., Chapman, A., Kern, M., & Brunner, W. (2024). Examining differences in time to appointment and no-show rates between rural telehealth users and non-users. *Frontiers in Digital Health*, 6. <https://doi.org/10.3389/fdgth.2024.1264893>

Bergeron, C.D., Cisneros Franco, C. L., Sherman, L. D., Pullyblank, K., Brunner, W., Brandford, A. A., Lin Kew, C., Smith, M. L. (2024). Health care engagement in disease prevention and management: Factors influencing chronic disease program referral adherence among non-Hispanic Black and Hispanic men with chronic conditions. *American Journal of Men's Health*, <https://doi.org/10.1177/15579883241288978>

Szeszulski, J., Rolke L. J., Ayine, P., Bailey, R., Demment, M., Eldridge, G. D., Folta, S. C., Graham, M. L., MacMillan Uribe, A. L., McNeely, A., Nelson, M. E., Pullyblank, K., Rethorst, C., Strogatz, D., & Seguin-Fowler, R. A. (2024). Process evaluation findings from Strong Hearts, Healthy Communities 2.0: A cardiovascular disease prevention intervention for rural women. *International Journal of Behavioral Nutrition and Physical Activity*, 21. <https://doi.org/10.1186/s12966-024-01670-y>

Pullyblank, K. L., Eiland, L. A., Mohring, S. M., Nygaard, S., Keegan, S. S., Wichman, C. S., & Desouza, C. (2024). Diabetes-on-Track: Redesigning diabetes management in rural primary care. *Diabetes Spectrum*. <https://doi.org/10.2337/ds24-0043>

Pullyblank, K. (in press). Rural culture and diabetes self-management beliefs, behaviors, and health outcomes. *Nursing Research*

Tennyson S, Sipple JW, Fiduccia PC, Brunner W, Lembo E, Kjolhede C. School-Based Health Centers and Rural Community Health. In Warner ME, Reece J, and Zhang X. (Eds.). (2024). *Community Development and Schools: Conflict, Power and Promise (1st ed.)*. Routledge. <https://doi.org/10.4324/9781003463412>

Brunner WM, Han Z, Tennyson S, Fiduccia PC, Krupa N, Kjolhede C. Impact of Rural School-Based Health Centers on Asthma Management. *J Pediatr*. 2024 Nov 2;277:114385. doi: 10.1016/j.jpeds.2024.114385. Epub ahead of print. PMID: 39491783. <https://doi.org/10.1016/j.jpeds.2024.114385>

Xi Y, Mielenz TJ, Andrews HF, Hill LL, Strogatz D, DiGuseppi C, Betz ME, Jones V, Eby DW, Molnar LJ, Lang BH, Li G. Prevalence of Depression in Older Adults and the Potential Protective Role of Volunteering: Findings from the Longitudinal Research on Aging Drivers (LongROAD) Study (in press). *Journal of the American Geriatrics Society*, 2024.

Shi X, Frank LD, Hill LL, Strogatz D (in press). Home Neighborhood, Driving Exposure and Safety among Older Adults: A Mediation Analysis from the LongROAD Study. *Findings*, 2024.

Whitaker RC, Dearth-Wesley T, Herman AN. Parent-child connection and the development of flourishing. *Acad Pediatr*. 2024;24(7):1033-1034. DOI: 10.1016/j.acap.2024.05.007. PMID: 38797474.

Whitaker RC*, Payne GB†, O'Neill MA, Brennan MM, Herman AN, Dearth-Wesley T, Weil HFC. Trauma-informed undergraduate medical education: a pathway to flourishing with adversity by enhancing psychological safety. *Perspect Med Educ*. 2024;13(1):324-331. DOI: 10.5334/pme.1173. PMID: 38863986; PMCID: PMC11166023.

Dearth-Wesley T, Herman AN, Whitaker RC. Relationships matter: how to support relational health in your early childhood education community. *Exchange*. Summer 2024; Issue 274.

Presentations and Published Abstracts

The association of environmental mastery and diabetes distress among young adults with type 1 diabetes. Nagel K, Dearth-Wesley T, Herman AN, Whitaker RC. American Diabetes Association Meeting, 84th Scientific Sessions, Orlando, FL, June 22, 2024. (poster)

Nagel KE†, Dearth-Wesley T, Herman AN, Whitaker RC. The association of environmental mastery and diabetes distress among young adults with type 1 diabetes. *Diabetes*. 2024;73(suppl 1): DOI: 10.2337/db24-703-P (abstract 703-P).

Rosen, M., Pullyblank, K., Rogers, A., Wichman, C., Baron, M., & Dzewaltowski, D. (2024, October). Rural Diabetes on Track project: Facilitating coordination of local system collective decision-making processes for community-driven action. Poster presentation at 2024 American Public Health Association Annual Meeting; October 27-30, 2024; Minneapolis, MN.

Flynn, J. & Wyckoff, L. (2024, September). Aligning community assets to connect people with whole food. Poster presentation at 2024 New York State Association of Rural Health Symposium; September 19-20, 2024; Binghamton, NY.

Pullyblank, K. Community system redesign: An alternative approach to improving rural population health (2024, September). Podium presentation at 2024 New York State Association of Rural Health Symposium; September 19-20, 2024; Binghamton, NY.

Mulla, A., Chakrabarti, A., LaVaute, B., Robinson, M. L., Pullyblank, K. L., Gilmore, N. J., Korytko, T. P., Brunner, W. M., Mustian, K. M., & Lin, P. (2024). The feasibility and effectiveness of virtual YOCAS yoga for insomnia among cancer survivors: 2963. *Medicine & Science in Sports & Exercise*, 56(10S), 1093.

Chakrabarti, A., Mulla, A., Gada, U., LaVaute, B., Samuel, S., Robinson, M. L., Pullyblank, K., Korytko, T. P., Brunner, W., Lin, P., & Mustian, K. (2024). Electronic YOCAS intervention for pain: A decentralized digital randomized controlled trial with cancer survivors: 2932. *Medicine & Science in Sports & Exercise*, 56(10S), 1082-1083.

Rosen, M., Keegan, S., Pullyblank, K., Nygaard, S., Baron, M., & Dzewaltowski, D. (2024, August). Establishing a rural community coordination process to improve population-level diabetes outcomes. Poster presentation at 2024 Association of Diabetes Care & Education Specialists Conference; August 9-12, 2024; New Orleans, LA.

Eiland, L., Mohring, S., Keegan, S., Nygaard, S., Pullyblank, K., & Desouza, C. (2024, June). The Diabetes on Track model: Creating a framework for improving diabetes in rural Nebraska. Poster presentation at American Diabetes Association Scientific Sessions, Orlando, FL.

Eiland, L., Mohring, S., Keegan, S., Nygaard, S., Pullyblank, K., & Desouza, C. (2024, June). Value-based incentive programs to improve diabetes care in rural Nebraska. Poster presentation at American Diabetes Association Scientific Sessions, Orlando, FL.

Pullyblank, K., Manganello, J., Massey, P., Brunner, W., Liberati, C., Krupa, N., Scribani, M. B., & Strogatz, D. Engaging rural parents in the design of messages about the HPV vaccine. 2024 SBM Annual Meeting Abstracts Supplement, Philadelphia March, 2024. In: *Annals of Behavioral Medicine*, 58, S1-S705. <https://doi.org/10.1093/abm/kaae014>

Manganello, J., Brunner, W., Krupa, N., Scribani, M. B., Massey, P., Pullyblank, K., & Strogatz, D. (2024). Rural parent perspectives on HPV vaccine information. 2024 SBM Annual Meeting Abstracts Supplement, Philadelphia March, 2024. In: *Annals of Behavioral Medicine*, 58, S1-S705. <https://doi.org/10.1093/abm/kaae014>

Brunner W, Tennyson S, Han Z, Fiduccia PC, Krupa N, Kjolhede C. Impact of Rural School-Based Health Centers on Asthma Management. Poster presentation. Cornell health equity conference. April 11, 2024.

Kjolhede C, Sipple J, Brunner W. Decreased Absenteeism Among Students in Rural Schools with School-Based Health Centers. Poster presentation. Cornell health equity conference. April 11, 2024.

Zhang X, Warner ME, Tennyson S, Brunner W, Wethington E, Sipple JW. School-Based Health Centers: An approach to address health disparities among rural youth. Poster presentation. Cornell health equity conference. April 11, 2024.

Kjolhede C, Brunner W, Tennyson S. Rural School-Based Health Centers and Asthma Management. American Academy of Pediatrics National Conference, Orlando FL. September 2024.

Media

Strengthening Appalachia’s Children newsletter article, August 30, 2024: What is a School-Based Health Center and Why Would You Want One? Chris Kjolhede, MD, MPH, Jane Hamilton, RN, Wendy Brunner, PhD; Department of Pediatrics and Bassett Healthcare Institute

Strengthening Appalachia’s Children newsletter article, August 30, 2024: Why School-Based Health Centers Matter for Rural Communities. Xue Zhang, PhD, Sharon Tennyson, PhD, Mildred E Warner, PhD, Wendy Brunner, PhD

- * denotes role as senior author
- † denotes student mentee (master’s or doctoral student, post-doctoral fellow, medical student or resident)
- ‡ denotes junior faculty mentee





Bassett Healthcare Network
Research Institute

One Atwell Road
Cooperstown, NY 13326
607-547-3456
1-800-BASSETT (227-7388)
bassettresearch.org

